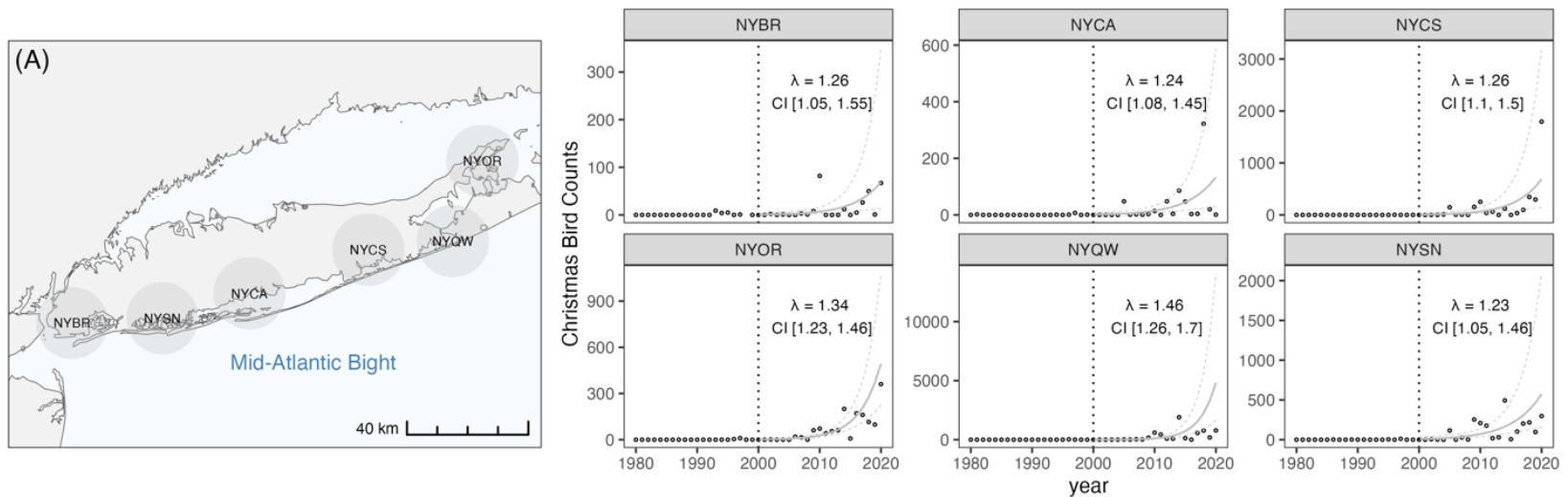
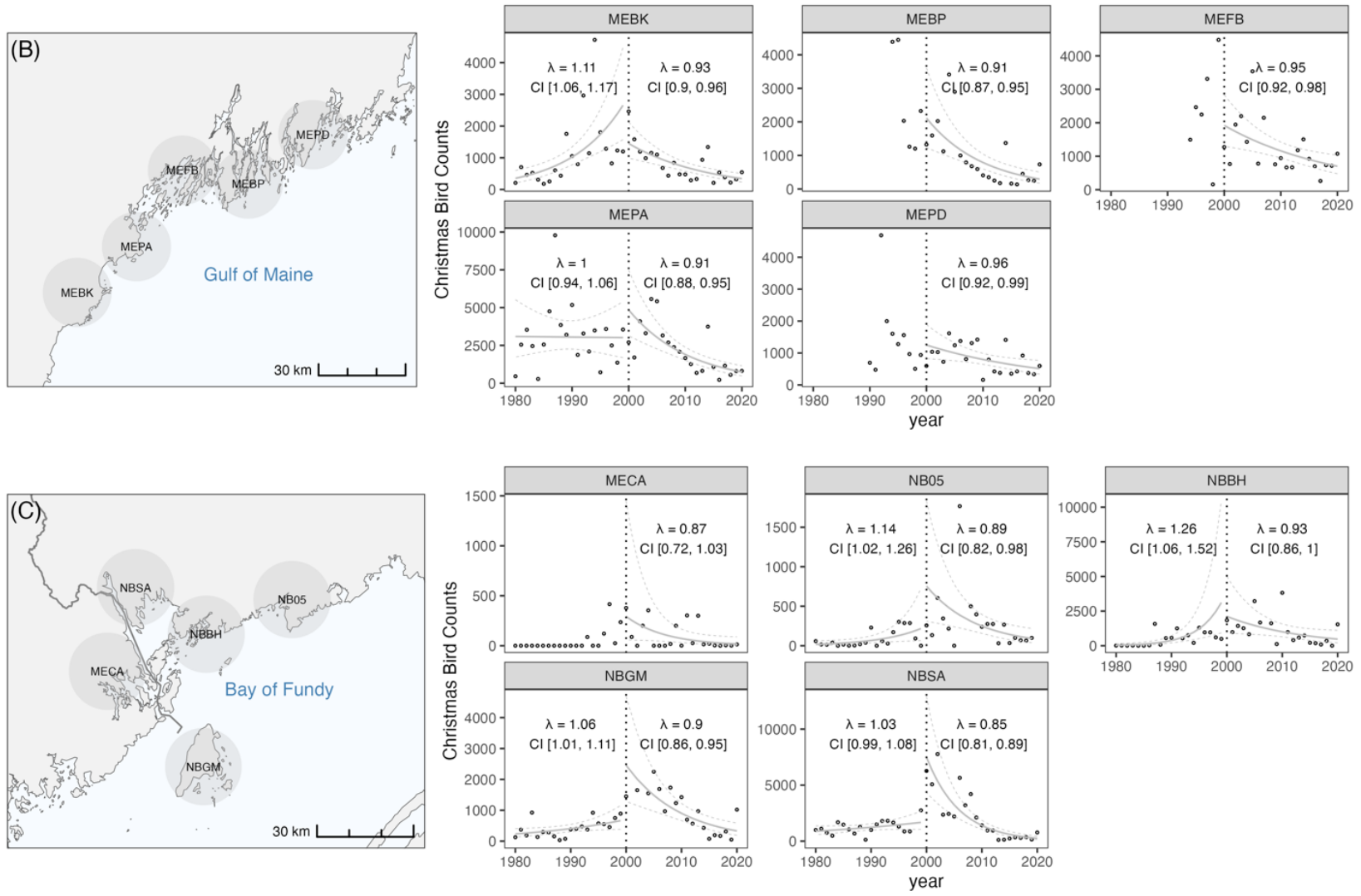


Appendix 4: Redistribution of wintering American Common Eiders (*Somateria mollissima dresseri*)
 Gutowsky SE, Robertson GJ, Mallory ML, McLellan NR, Gilliland SG

Appendix 4: Trends of Common Eider (*Somateria mollissima*) on Christmas Bird Count (CBC) circles monitored between 1980-2020 in three case study areas (row-wise, A-C) within the wintering range of the American Common Eider (*S. m. dresseri*) subspecies. Maps (left panes, A-C) for each case study area show the locations and maximum survey area of CBC circles (based on a 12 km radius from the circle center) labeled by the CBC-designated route name abbreviation. Raw data and predicted negative binomial relationships are shown for each circle in the right panes, with the year 2000 indicated by a dashed vertical line. Where trends could be estimated for the period 1980-1999 or 2000-2020, λ estimates are shown with 95% confidence intervals. Case study area numbers correspond to the extent indicators in the overview map showing λ for the period 2000-2020 (D, same as Figure 3). Acronyms reflect provinces and states (NL – Newfoundland, QC – Quebec, NS – Nova Scotia, NB – New Brunswick, ME – Maine, NH – New Hampshire, MA – Massachusetts, RI – Rhode Island, CT – Connecticut, NY – New York, NJ – New Jersey, DE – Delaware, MD – Maryland, VA - Virginia) with the exception of SPM (St. Pierre and Miquelon, France).



Appendix 4: Redistribution of wintering American Common Eiders (*Somateria mollissima dresseri*)
 Gutowsky SE, Robertson GJ, Mallory ML, McLellan NR, Gilliland SG



Appendix 4: Redistribution of wintering American Common Eiders (*Somateria mollissima dresseri*)
Gutowsky SE, Robertson GJ, Mallory ML, McLellan NR, Gilliland SG

