

Appendix 3. Supplementary material.

Figure A3.1. Wing length distribution of breeding Blackpoll Warblers in three the three Regions defined in Figure 1. See Appendix 2 for sample locations.

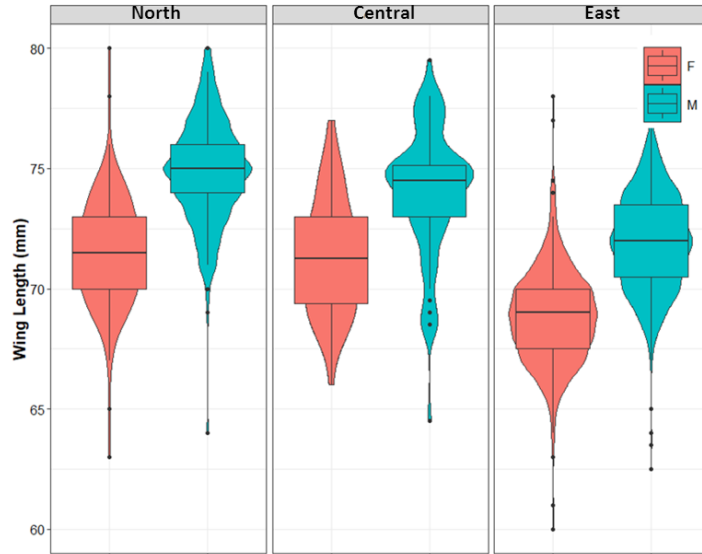


Figure A3.2. Coefficients of variation in 1000 bootstrapped assignments of δ^2H_f to the Breeding Regions defined in Figure 1.

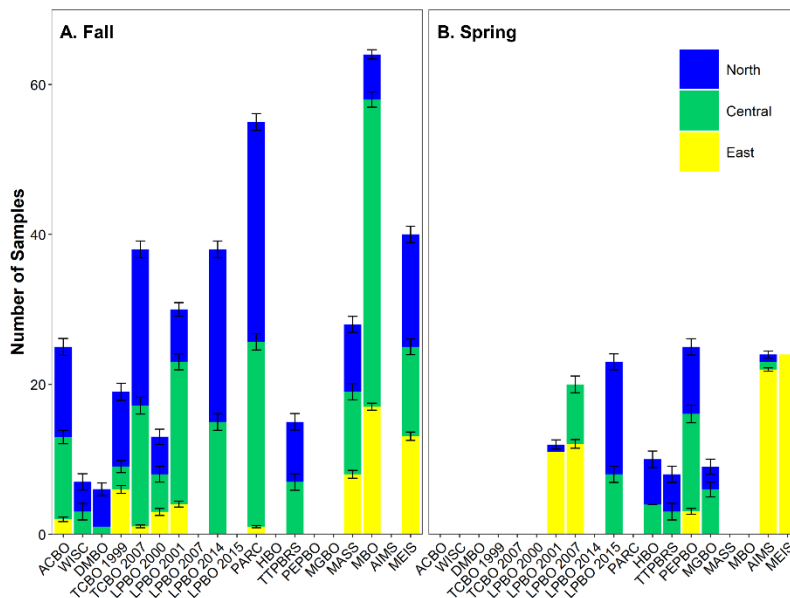


Figure A3.3. Geographic distribution of assigned breeding or natal origins of Blackpoll Warbler sampled during fall migration. The assignments included wing length as a Bayesian prior (see text). Red lines show the borders between the North, Central and East regions (Figure 1). The legend indicates probability from 0 to 1 (at top) that samples from the collection sites (indicated with red triangles) are isotopically consistent with a pixel of that color on the map. Assignment maps arranged west to east, with (n samples) following site name: A = Delta Marsh Bird Observatory (6), B = Wisconsin (8), C = Thunder Cape Bird Observatory (TCBO) in 1999 (21), D = TCBO in 2007 (38), E = Long Point Bird Observatory (LPBO) in 2000 (13), F = LPBO in 2001 (30), G = LPBO in 2014 (38), H = (Powdermill Avian Research Center (54), I = Tommy Thompson Park Bird Research Station (15), J = Massachusetts (28), K = Manomet Bird Observatory (60), and L = Metinic Island (41).

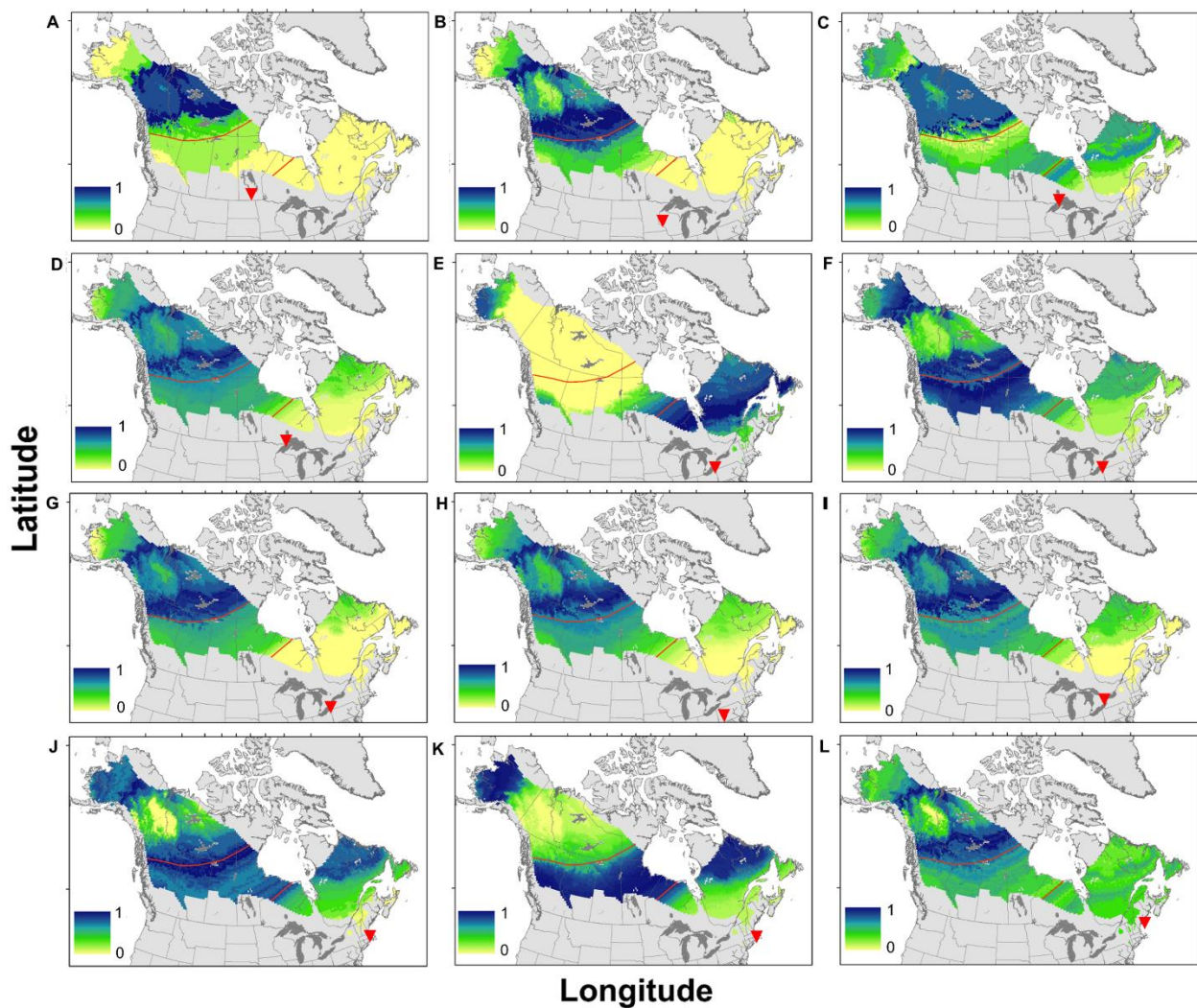


Figure A3.4. Geographic distribution of assigned breeding or natal origins of Blackpoll Warbler sampled during spring migration. Assignment includes Bayesian prior for wing length. Red lines show the borders between the North, Central and East regions (Figure 1). The legend indicates probability from 0 to 1 (at top) that samples from the collection sites (indicated with red triangles) are isotopically consistent with a pixel of that color on the map. Assignment maps arranged west to east, with n samples following site name: A = Albert Creek Bird Observatory (25), B = Long Point Bird Observatory (LPBO) in 2001 (11), C = LPBO in 2007 (20), D = LPBO in 2015 (24), E = Haldimand Bird Observatory (10), F = (Tommy Thompson Park Bird Research Station (8), G = (Prince Edward Point Bird Observatory (25), H = McGill Bird Observatory (9), I = (Appledore Island Migration Station (23), and J = (Metinic Island (25).

