

APPENDIX

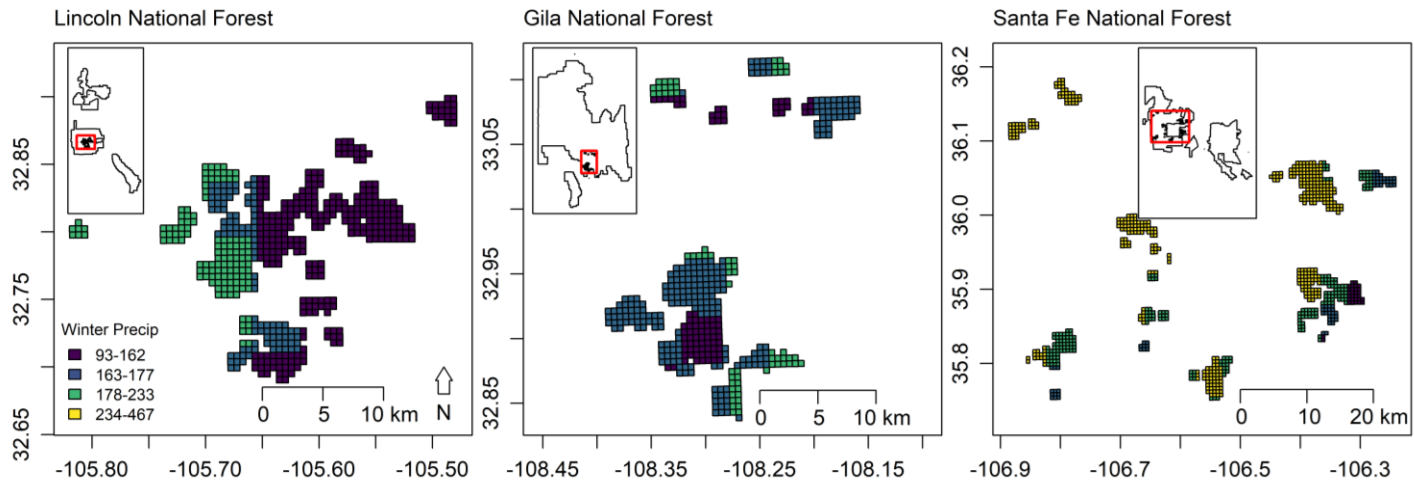


Figure A1.1: Winter precipitation (1 Oct – 31 Mar) in the study areas within Lincoln, Gila, and Santa Fe National Forests. The main figure shows the spatial grid of locations for Band-tailed Pigeons with the inset showing the National Forest with the study site in red.

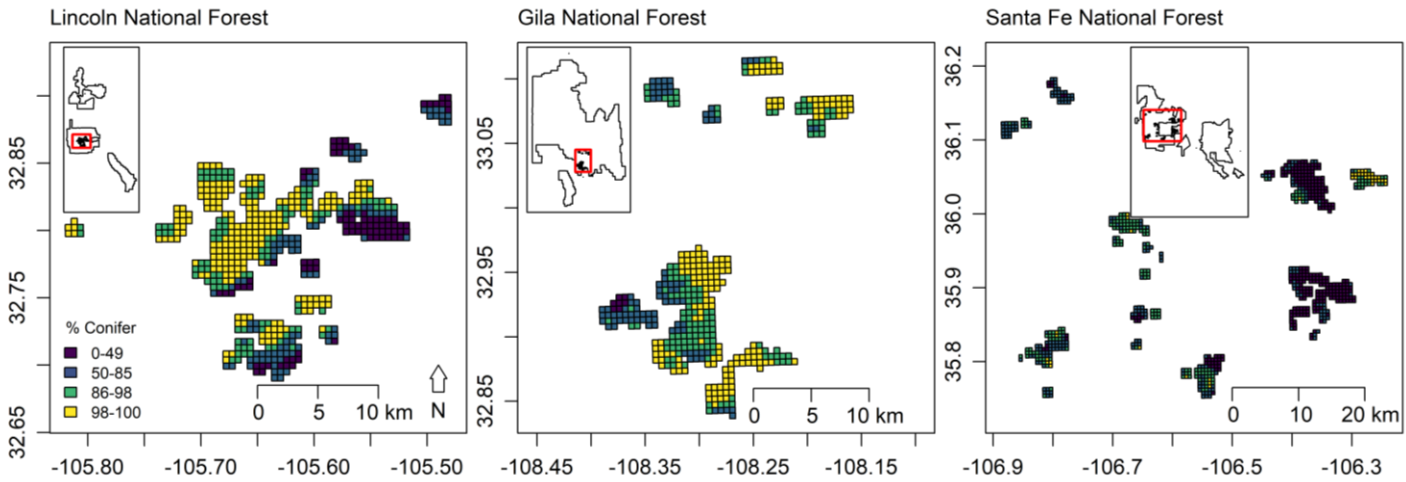


Figure A1.2: Percent conifer cover in the study areas within Lincoln, Gila, and Santa Fe National Forests. The main figure shows the spatial grid of locations for Band-tailed Pigeons with the inset showing the National Forest with the study site in red.

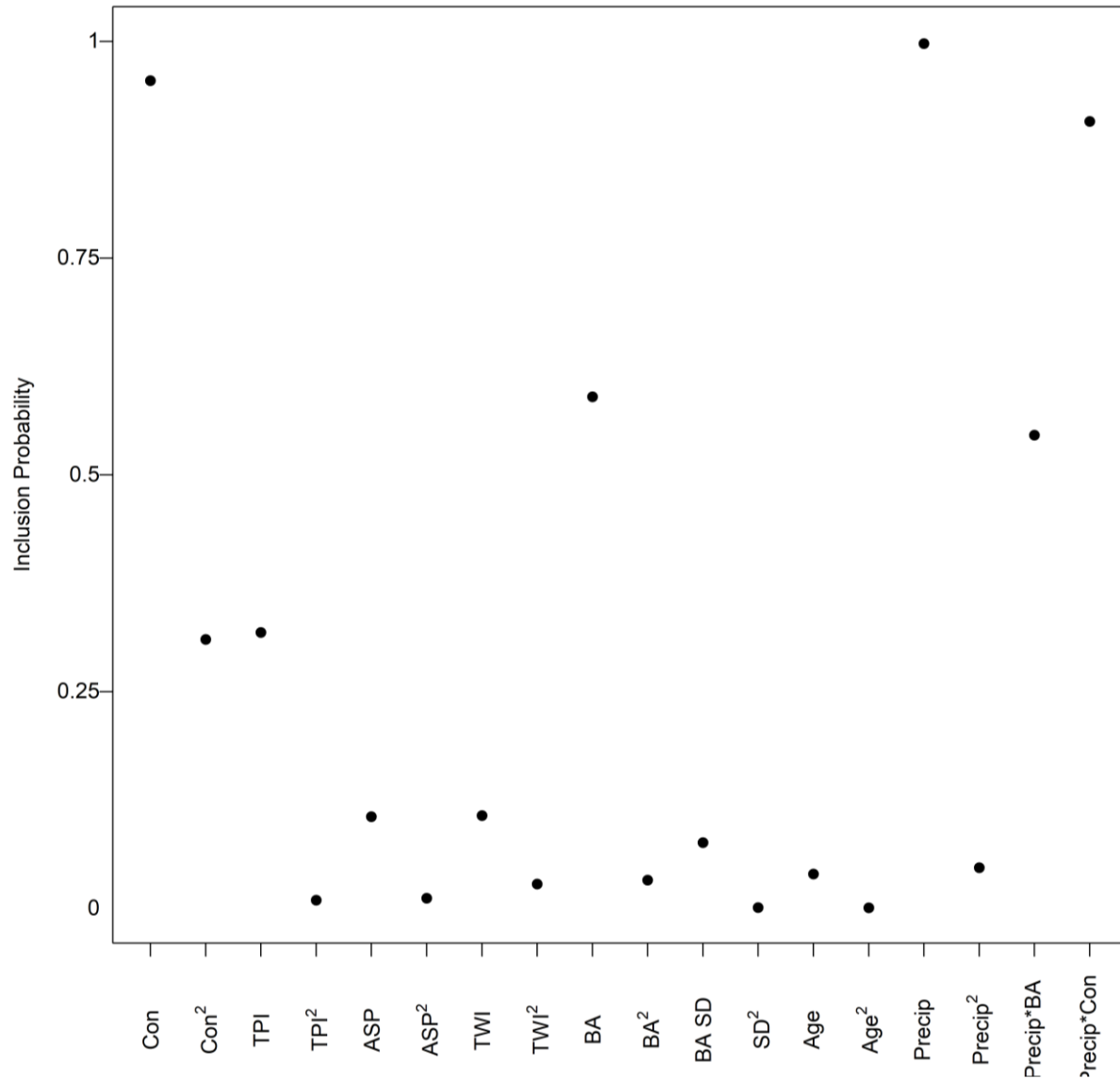


Figure A1.3: Proportion of times each covariate and its associated quadratic form was selected to include in the model. Covariates were proportion of conifer forest cover (Con), topographic position index (TPI), aspect (ASP), topographic wetness index (TWI), precipitation (Precip), basal area (BA), standard deviation of basal area (BA SD and SD²), stand age (Age), percent canopy cover (Canopy), and percent shrub cover (Shrub).