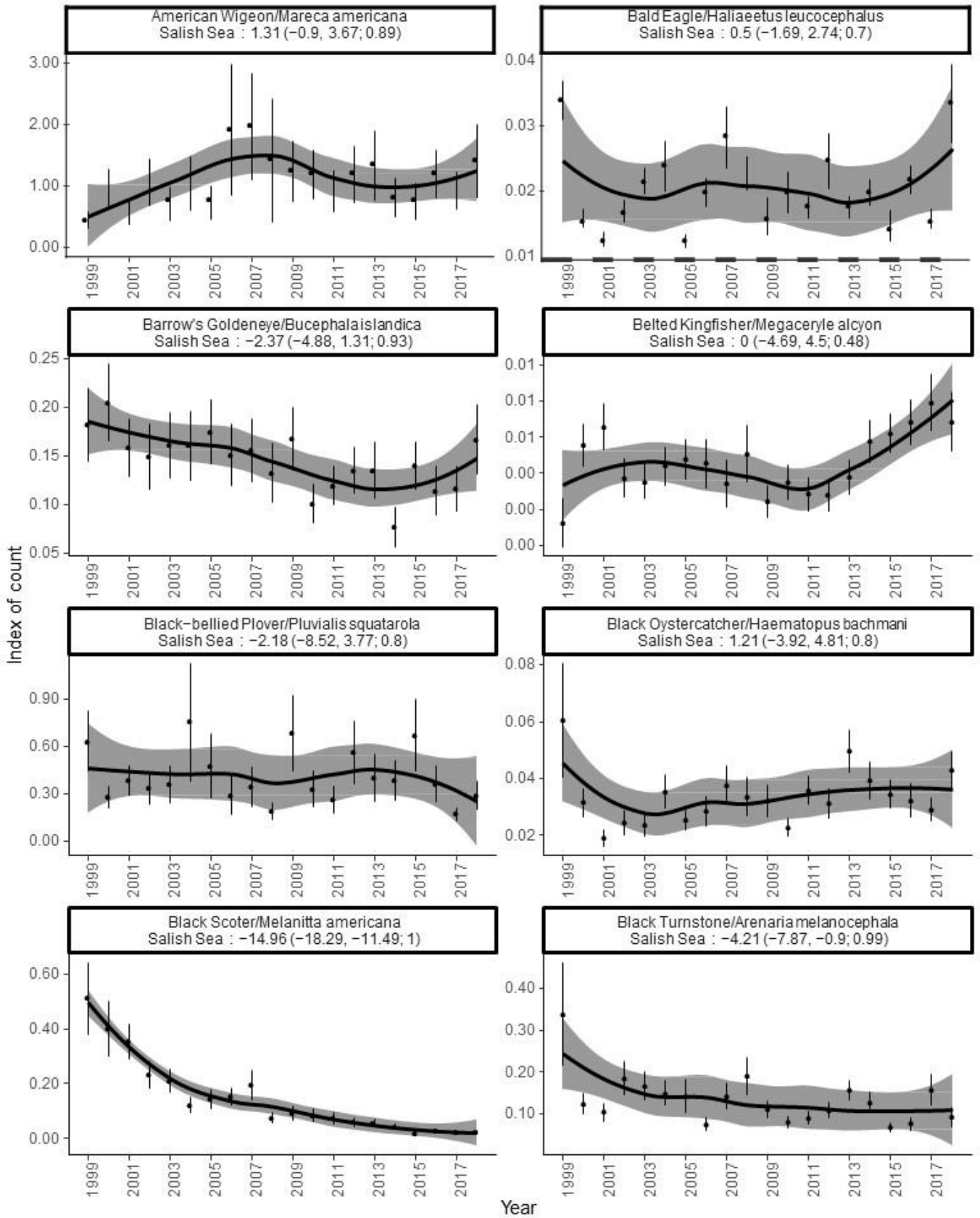


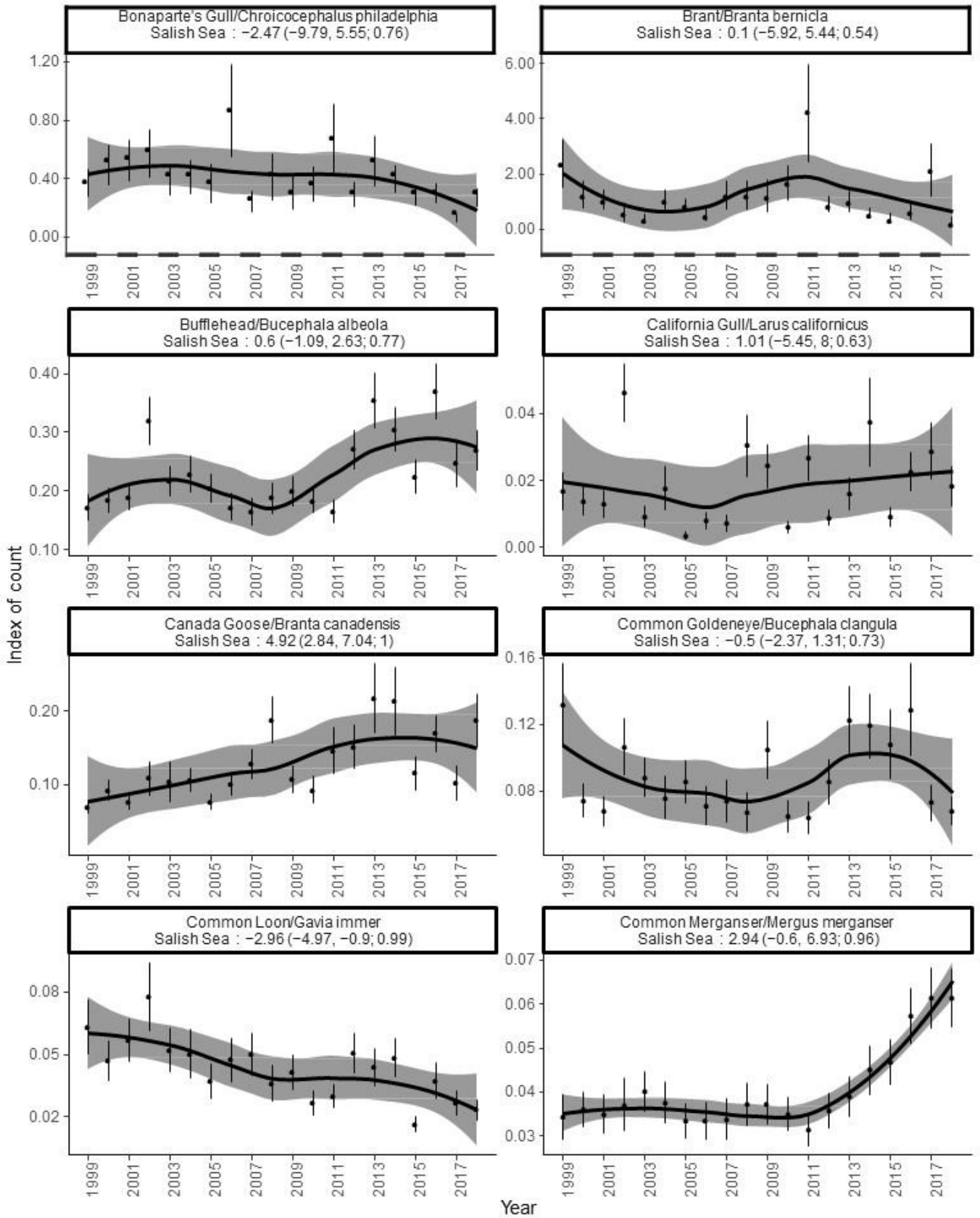
Appendix 2

Twenty-year trends of coastal waterbirds residing in the Salish Sea, British Columbia, Canada. The black dots on the graph are estimated indices of annual population size as calculated by the statistical model, with error bars representing the 95% credible intervals for the annual indices. Annual indices are expressed on a linear scale and represent the average of the predicted number of individual birds detected per day of survey. The black line is a smoothed visualization of the change in annual indices over time. The title of the plot contains the estimated linear trend value expressed as annual percent change per year of mean total count. The lower and upper limits of the 95% credible interval (CI) of the trends are shown in parentheses along with the posterior probability of the trend: a value greater than or equal to 0.95 provides additional support for the observed trend.

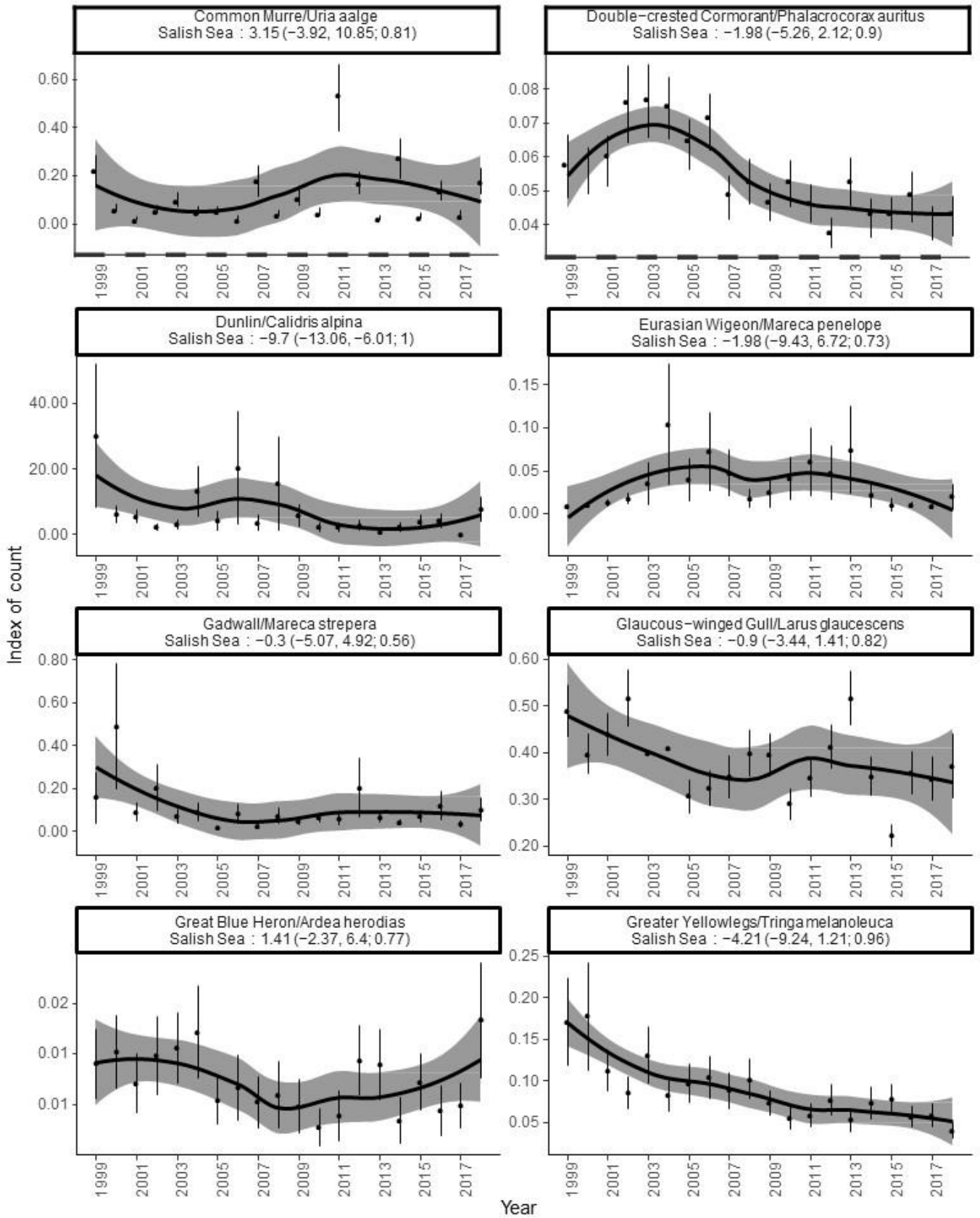
Appendix 2



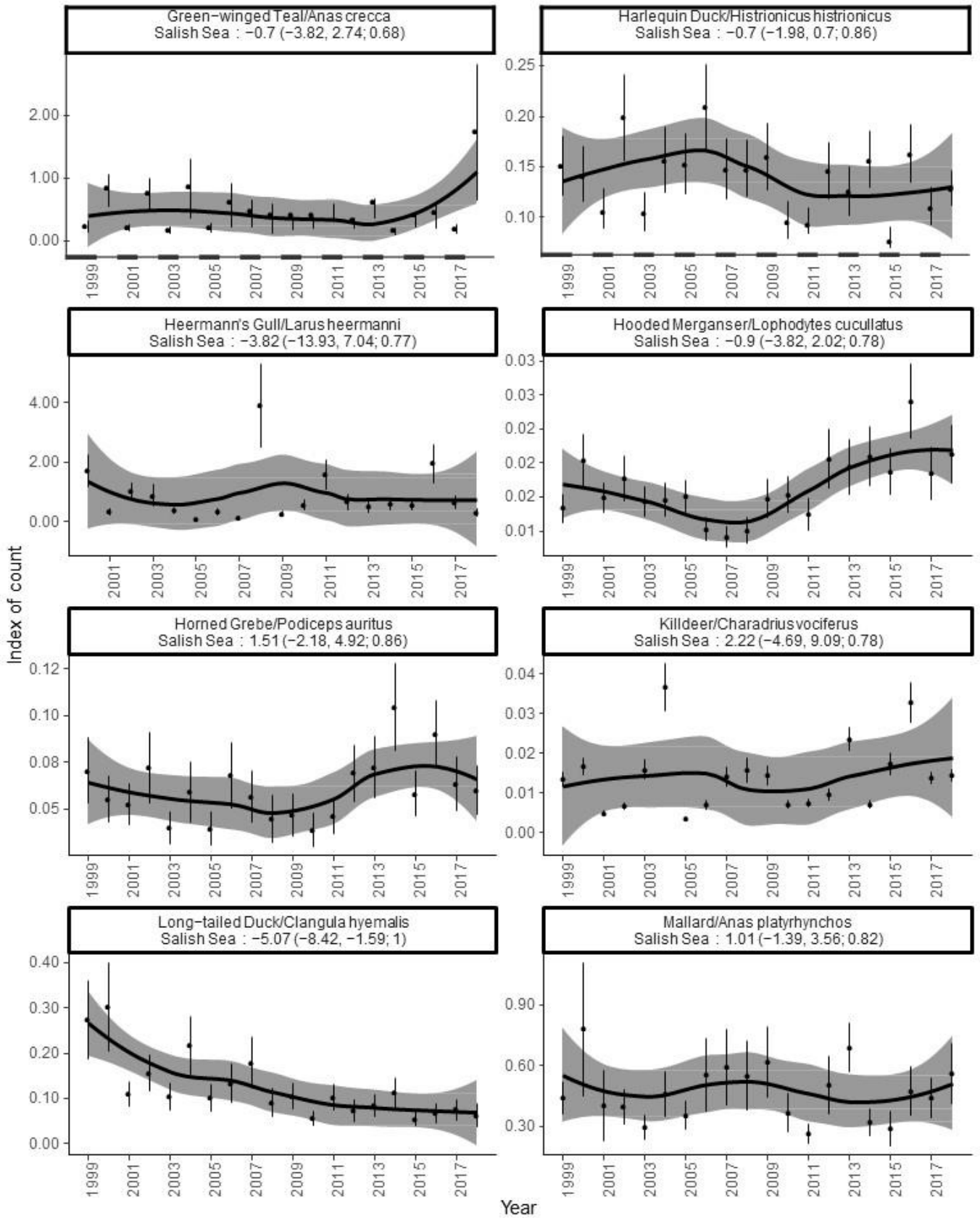
Appendix 2



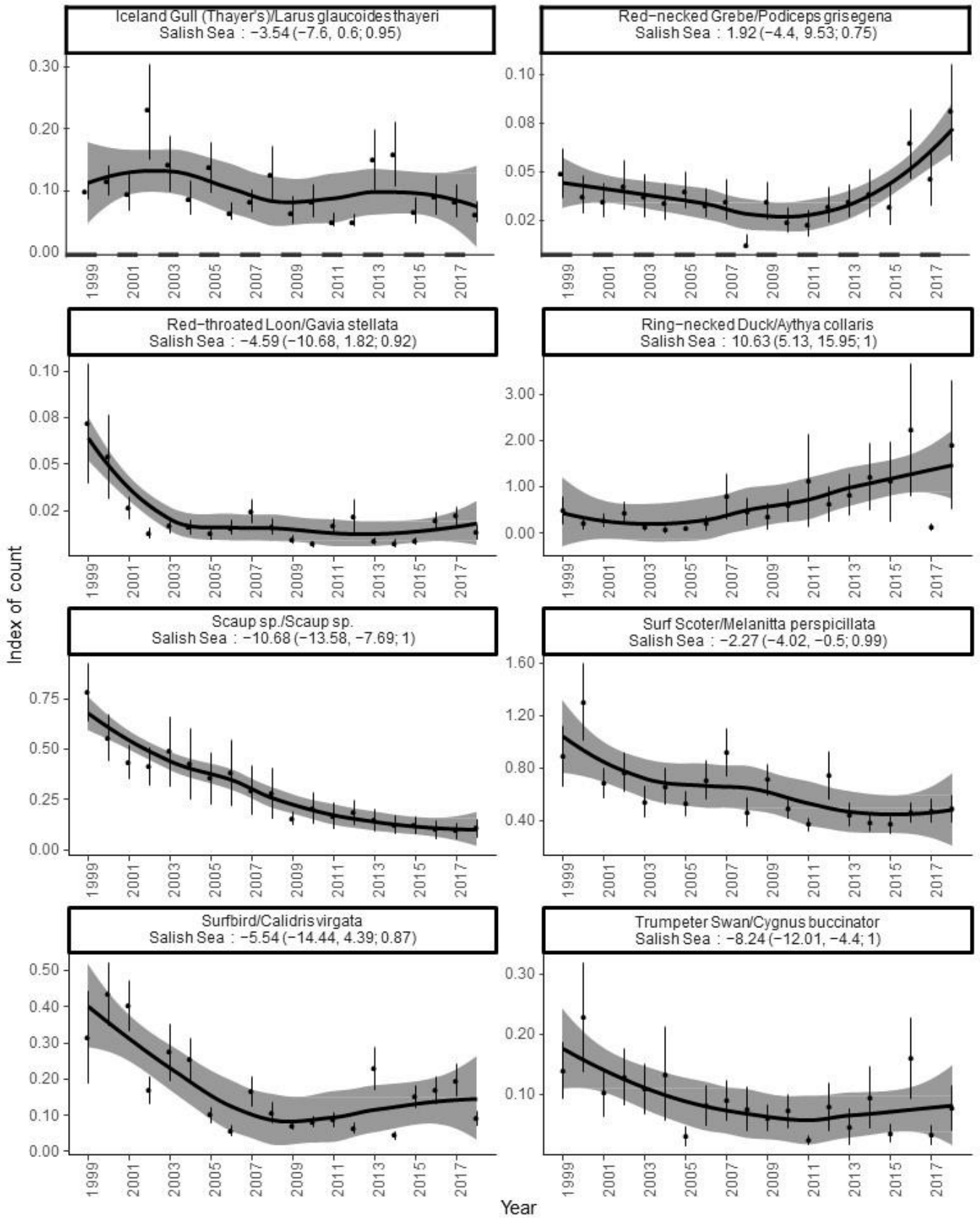
Appendix 2



Appendix 2



Appendix 2



Appendix 2

