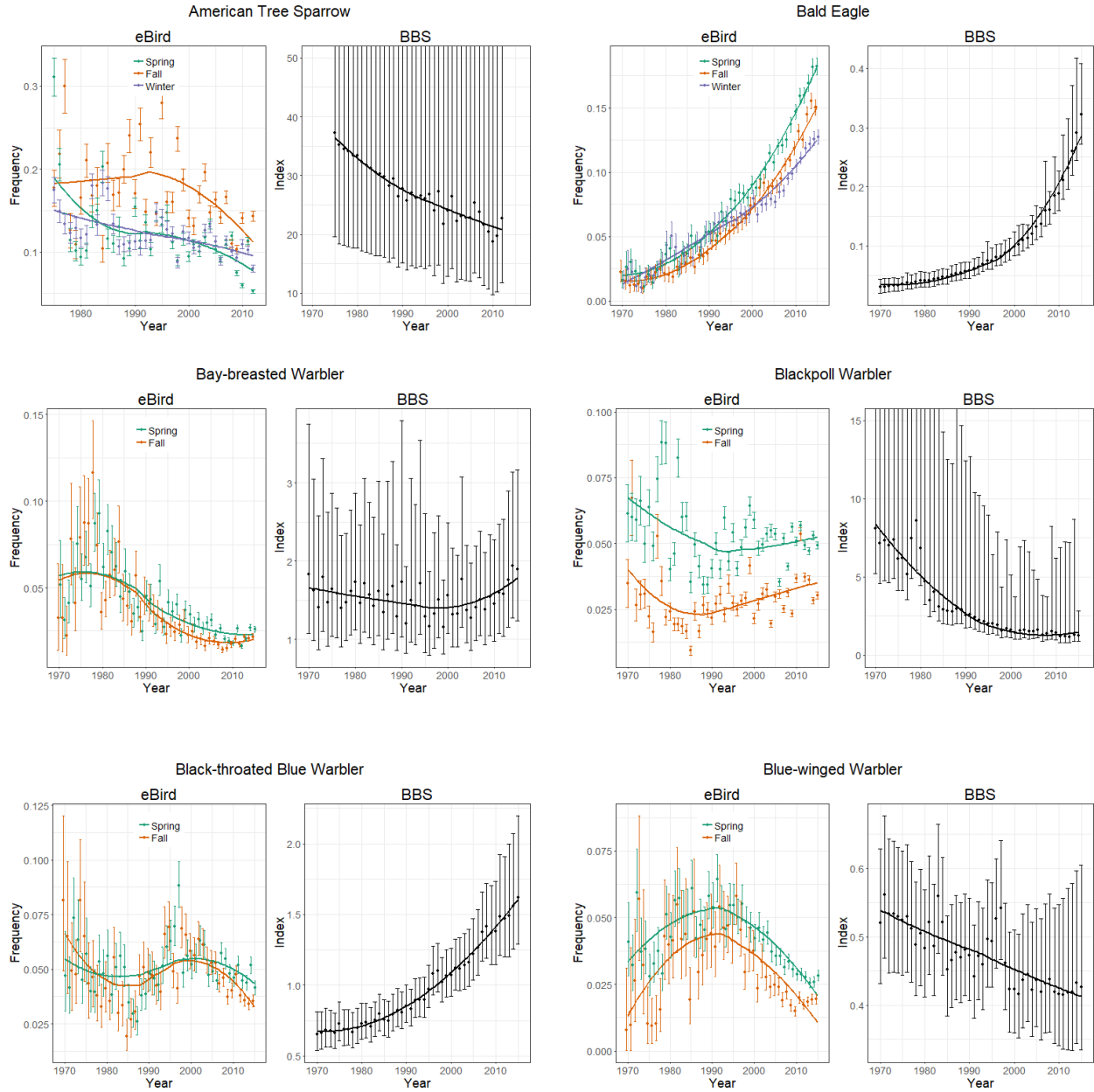
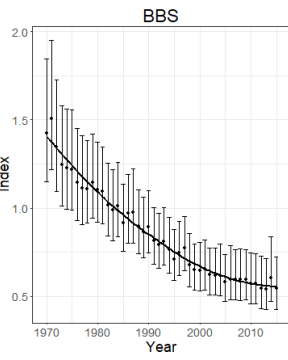
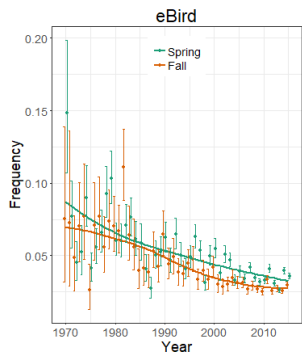


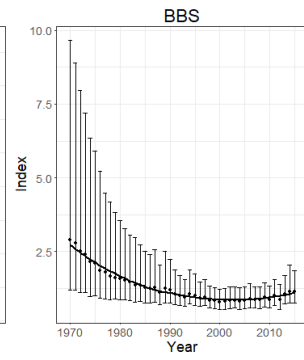
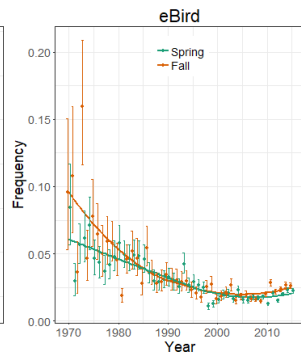
Appendix 6. Plots of eBird annual indices with their 95% credible intervals and smoothed trajectories (LOESS with a span of 1) adjacent to those from models of BBS data, for each of the species for which data were available from BBS. The y-axis was truncated on BBS plots for several species with large credible intervals, so that the estimated trajectory was evident.



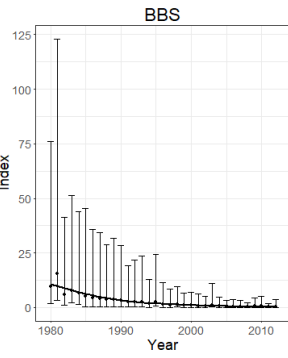
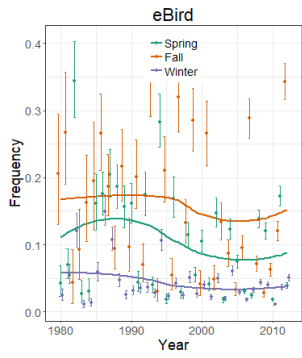
Canada Warbler



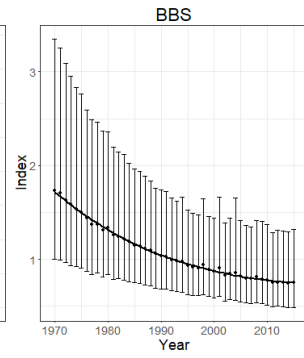
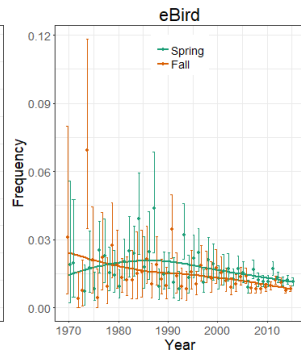
Cape May Warbler



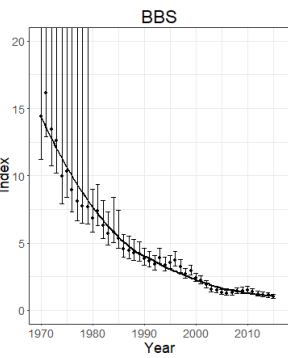
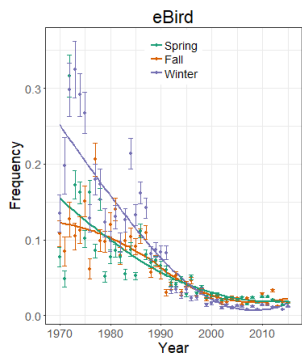
Common Redpoll



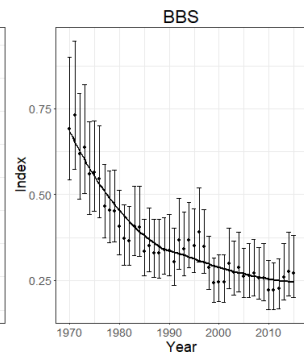
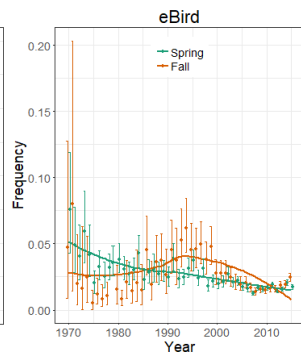
Connecticut Warbler



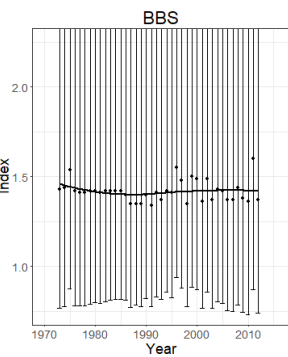
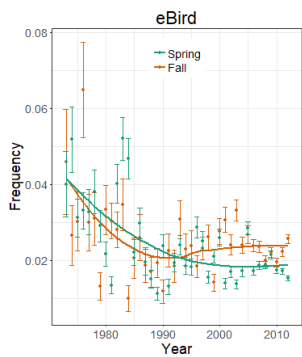
Evening Grosbeak



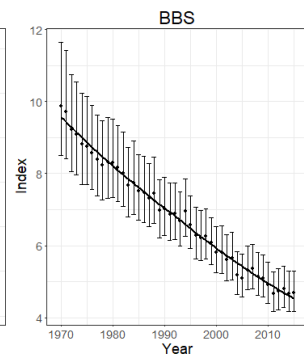
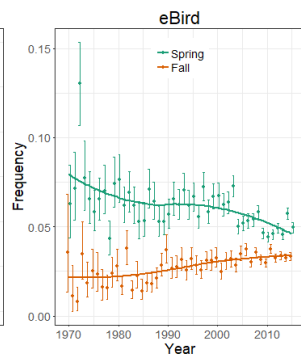
Golden-winged Warbler



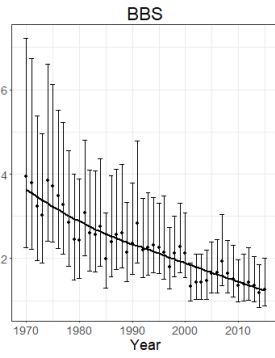
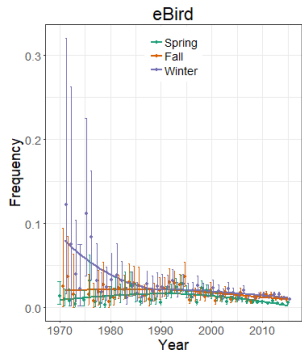
Gray-cheeked Thrush



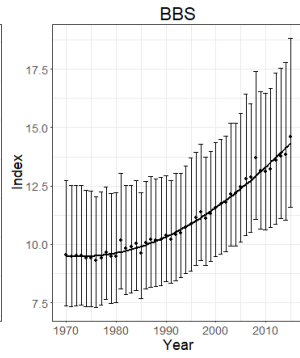
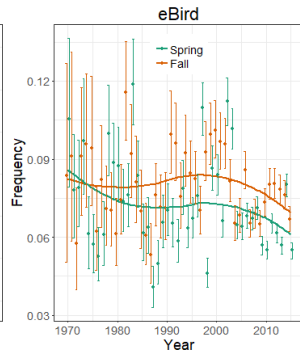
Least Flycatcher



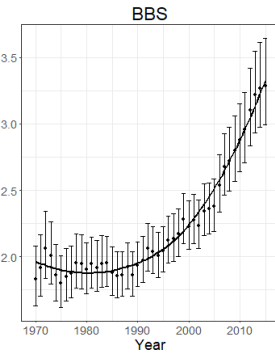
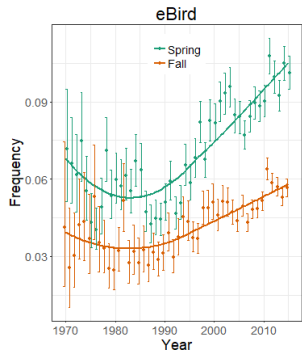
Le Conte's Sparrow



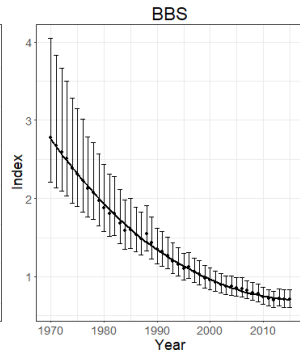
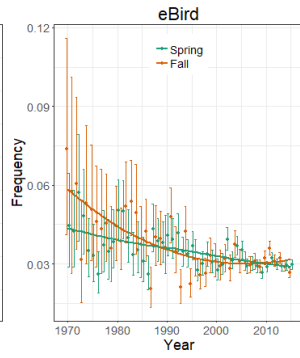
Magnolia Warbler



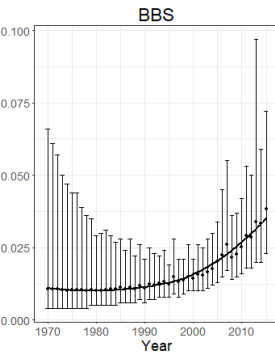
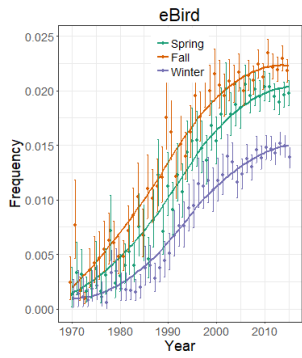
Northern Parula



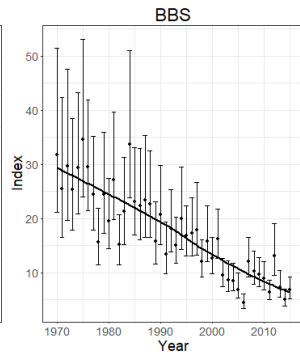
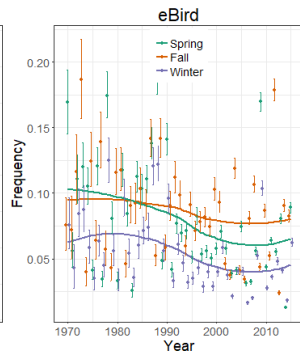
Olive-sided Flycatcher



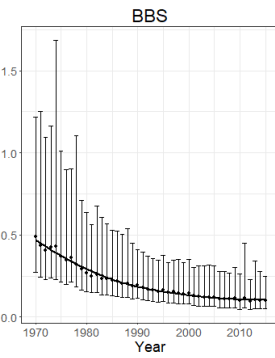
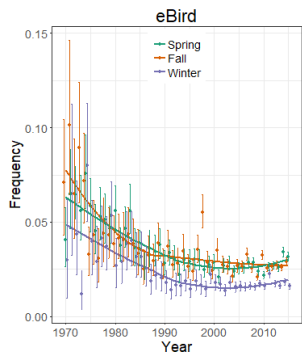
Peregrine Falcon



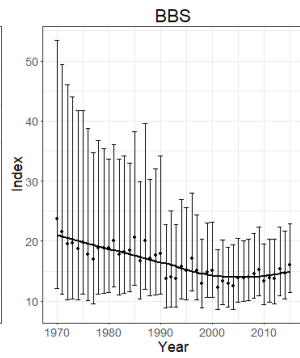
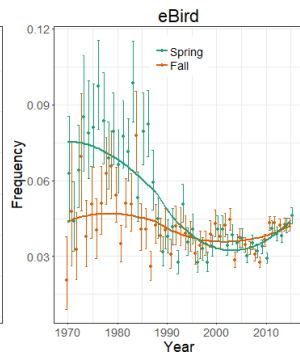
Pine Siskin



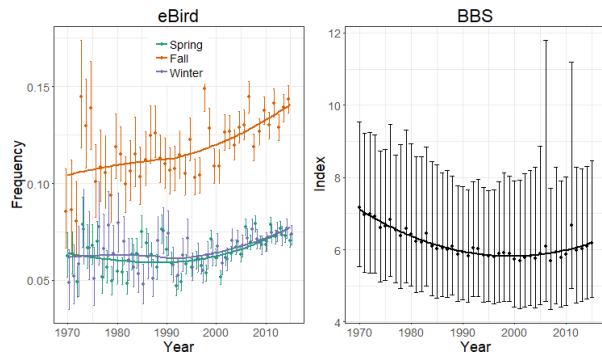
Rusty Blackbird



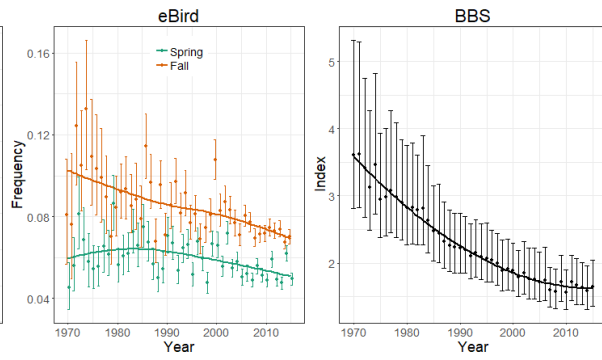
Tennessee Warbler



White-crowned Sparrow



Wilson's Warbler



Yellow-bellied Flycatcher

