

Appendix 8. Species importance

Spatio-temporal population change of arctic-breeding waterbirds

We mapped the relative importance of approximately 36 km² (6 km by 6 km) cells to 20 waterbird species observed during the Arctic Coastal Plain Breeding Waterfowl Survey, Alaska, 1992–2016. We defined cells as important, unimportant, or average for each cell-species. See the Methods section of the main text for more detail on importance scores. We present maps in taxonomic order (Chesser et al. 2018) for Lesser Snow Goose, Greater White-fronted Goose, Black Brant, Cackling Goose, Tundra Swan, Northern Pintail, Scaup (Lesser and Greater combined), Steller's Eider, Spectacled Eider, King Eider, White-winged Scoter, Long-tailed Duck, Red-breasted Merganser, Jaeger (Pomarine, Parasitic, and Long-tailed combined), Sabine's Gull, Glaucous Gull, Arctic Tern, Red-throated Loon, Pacific Loon, and Yellow-billed Loon.

Chesser, R. T., K. J. Burns, C. Cicero, J. L. Dunn, A. W. Kratter, I. J. Lovette, P. C. Rasmussen, J. V. Remsen, Jr., J. D. Rising, D. F. Stotz, and K. Winker. 2018. Fifty-ninth supplement to the American Ornithological Society's check-list of North American birds. *The Auk: Ornithological Advances* 135:798–813.

Figure A8.1. Relative importance of cells for Lesser Snow Goose across the Arctic Coastal Plain, Alaska 1992–2016.

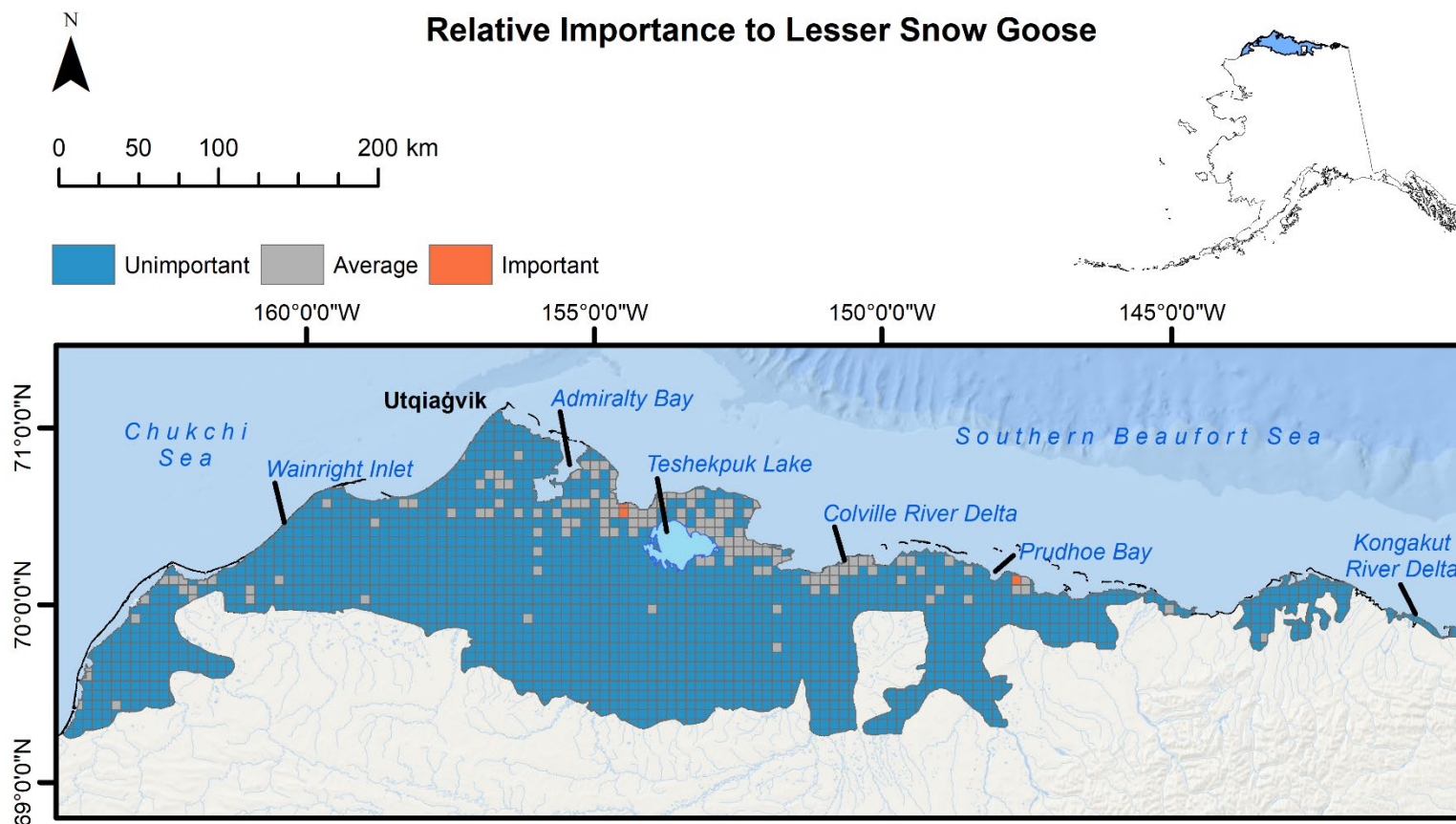


Figure A8.2. Relative importance of cells for Greater White-fronted Goose across the Arctic Coastal Plain, Alaska 1992–2016.

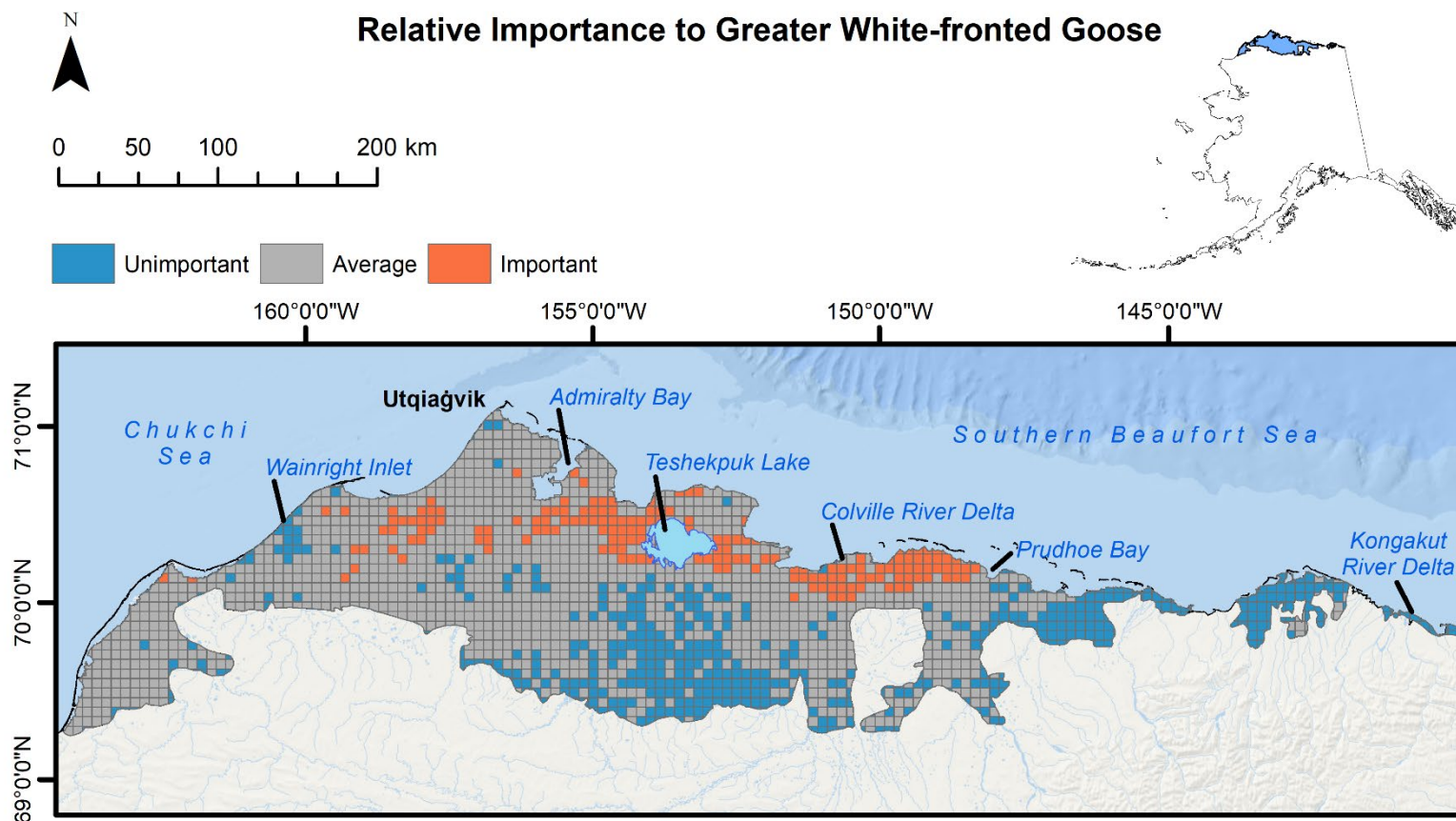


Figure A8.3. Relative importance of cells for Black Brant across the Arctic Coastal Plain, Alaska 1992–2016.

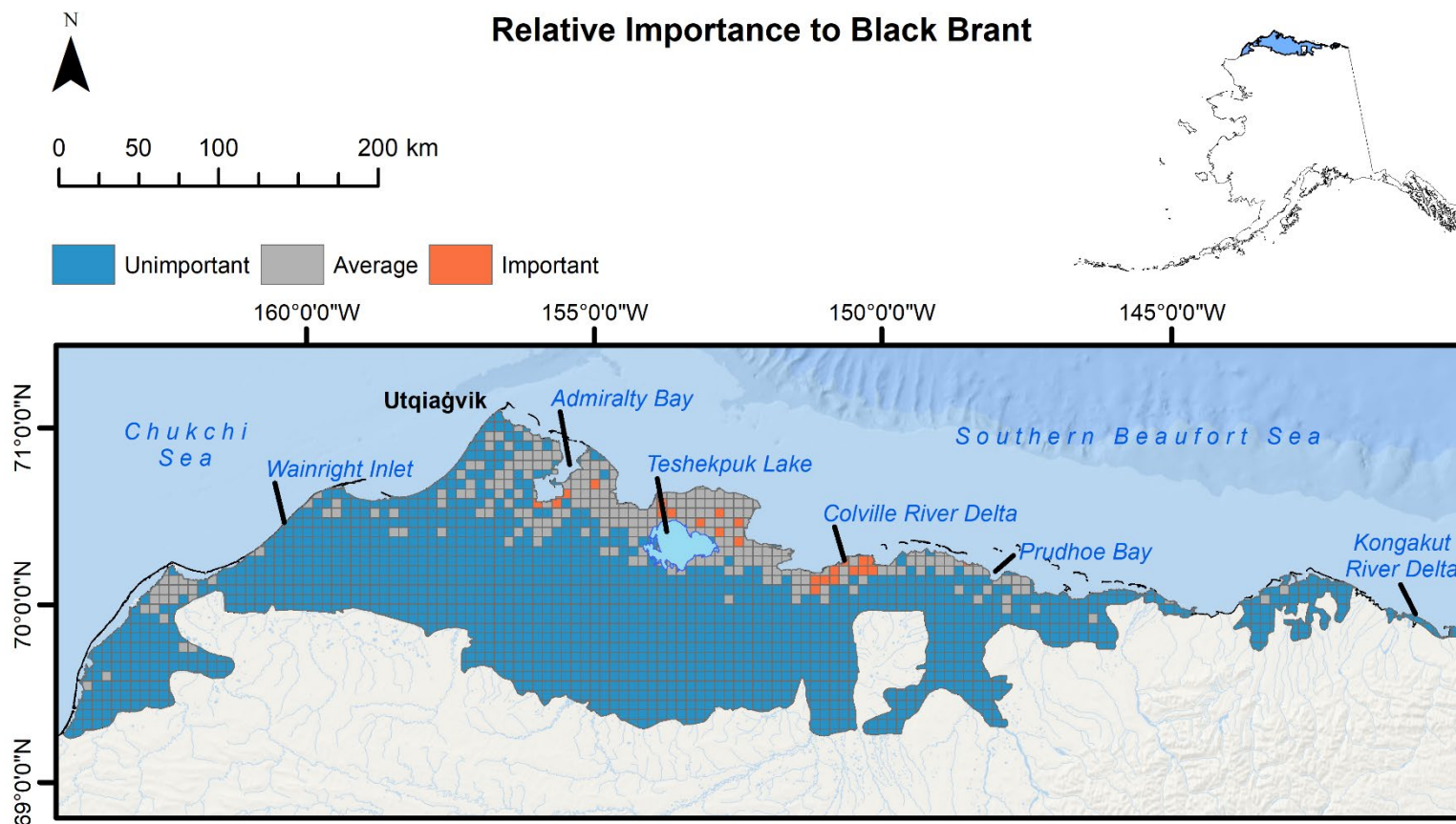


Figure A8.4. Relative importance of cells for Cackling Goose across the Arctic Coastal Plain, Alaska 1992–2016.

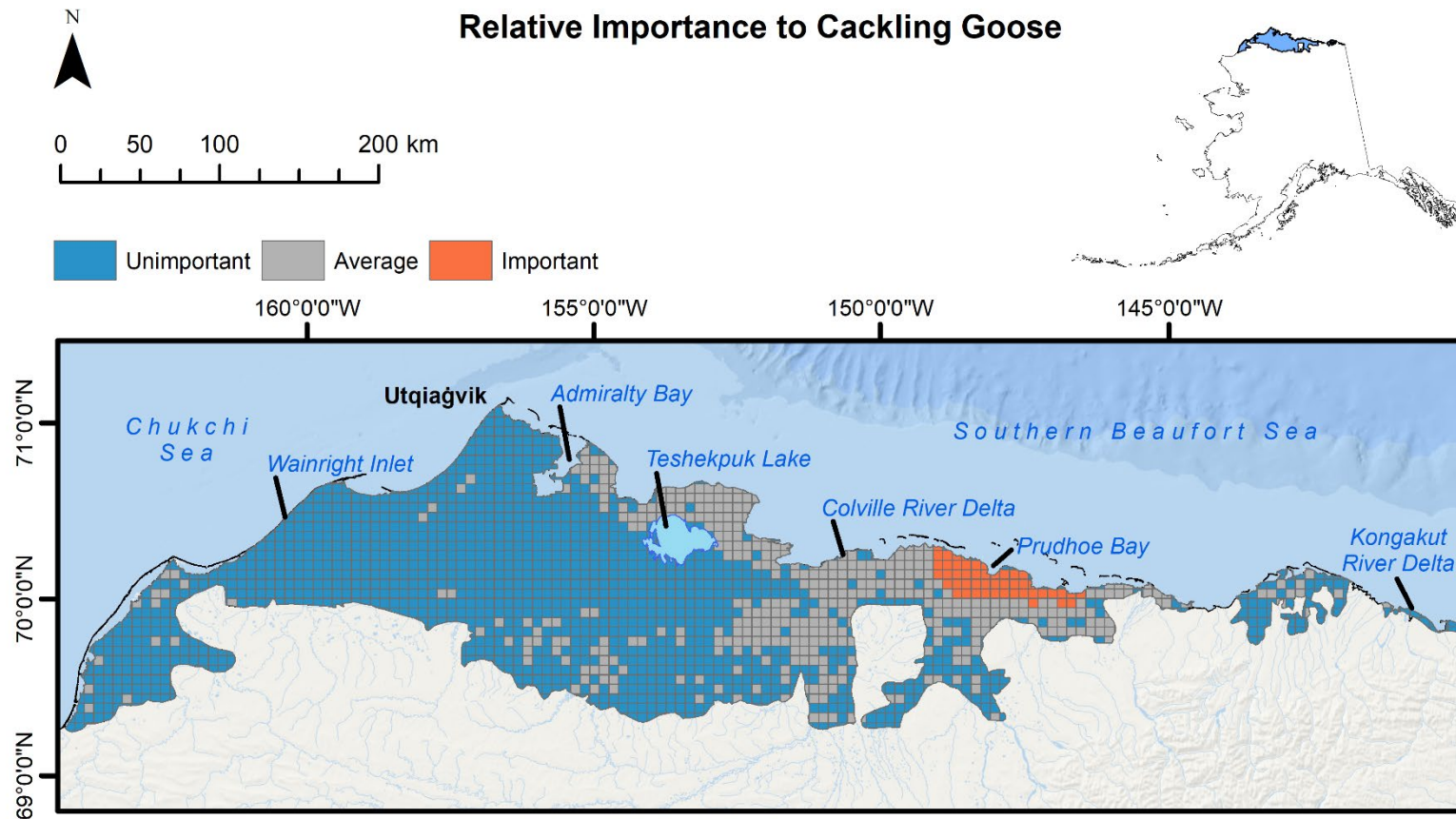


Figure A8.5. Relative importance of cells for Tundra Swan across the Arctic Coastal Plain, Alaska 1992–2016.

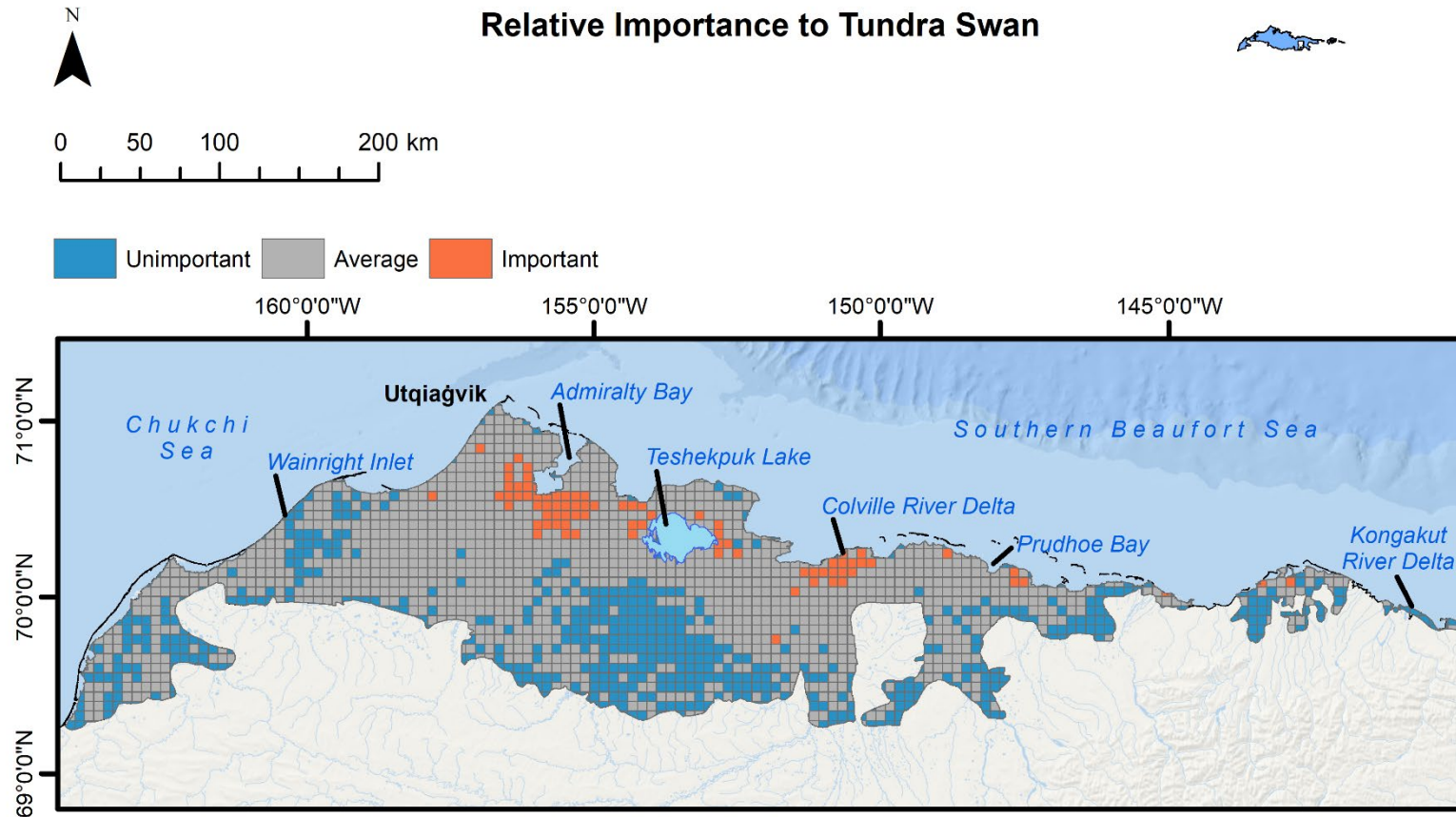


Figure A8.6. Relative importance of cells for Northern Pintail across the Arctic Coastal Plain, Alaska 1992–2016.

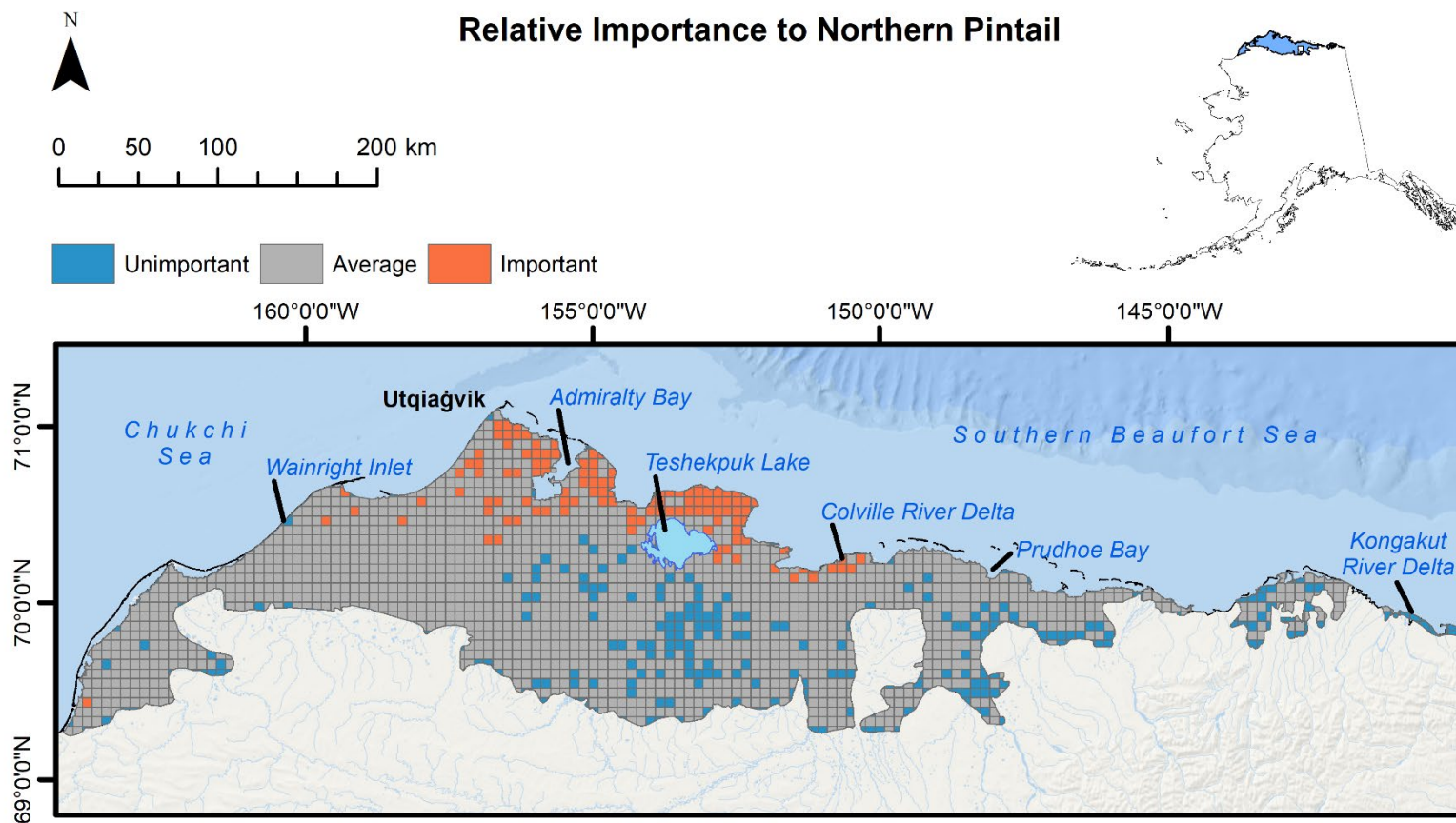


Figure A8.7. Relative importance of cells for Scaup sp. (Lesser and Greater combined) across the Arctic Coastal Plain, Alaska 1992–2016.

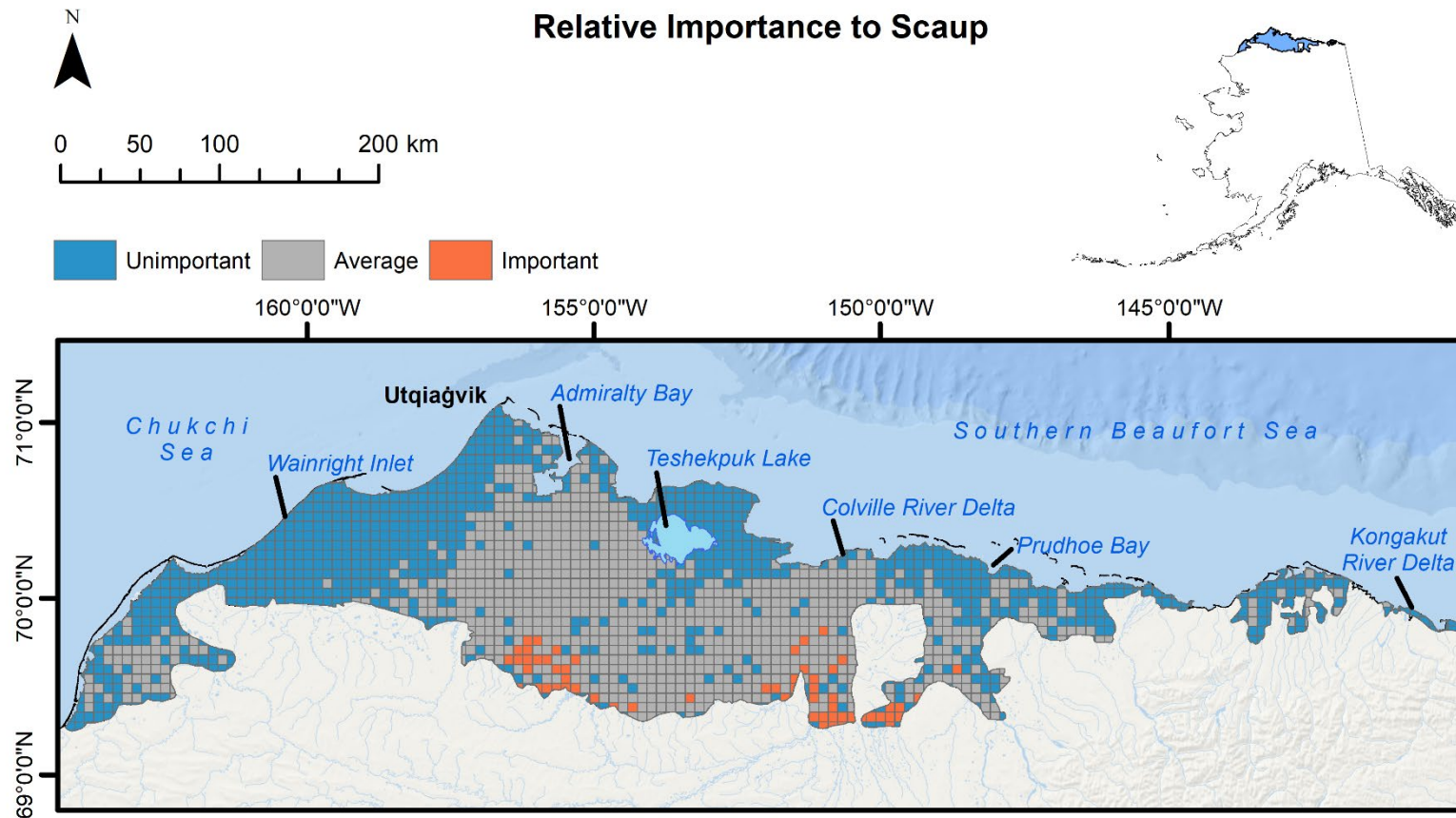


Figure A8.8. Relative importance of cells for Steller's Eider across the Arctic Coastal Plain, Alaska 1992–2016.

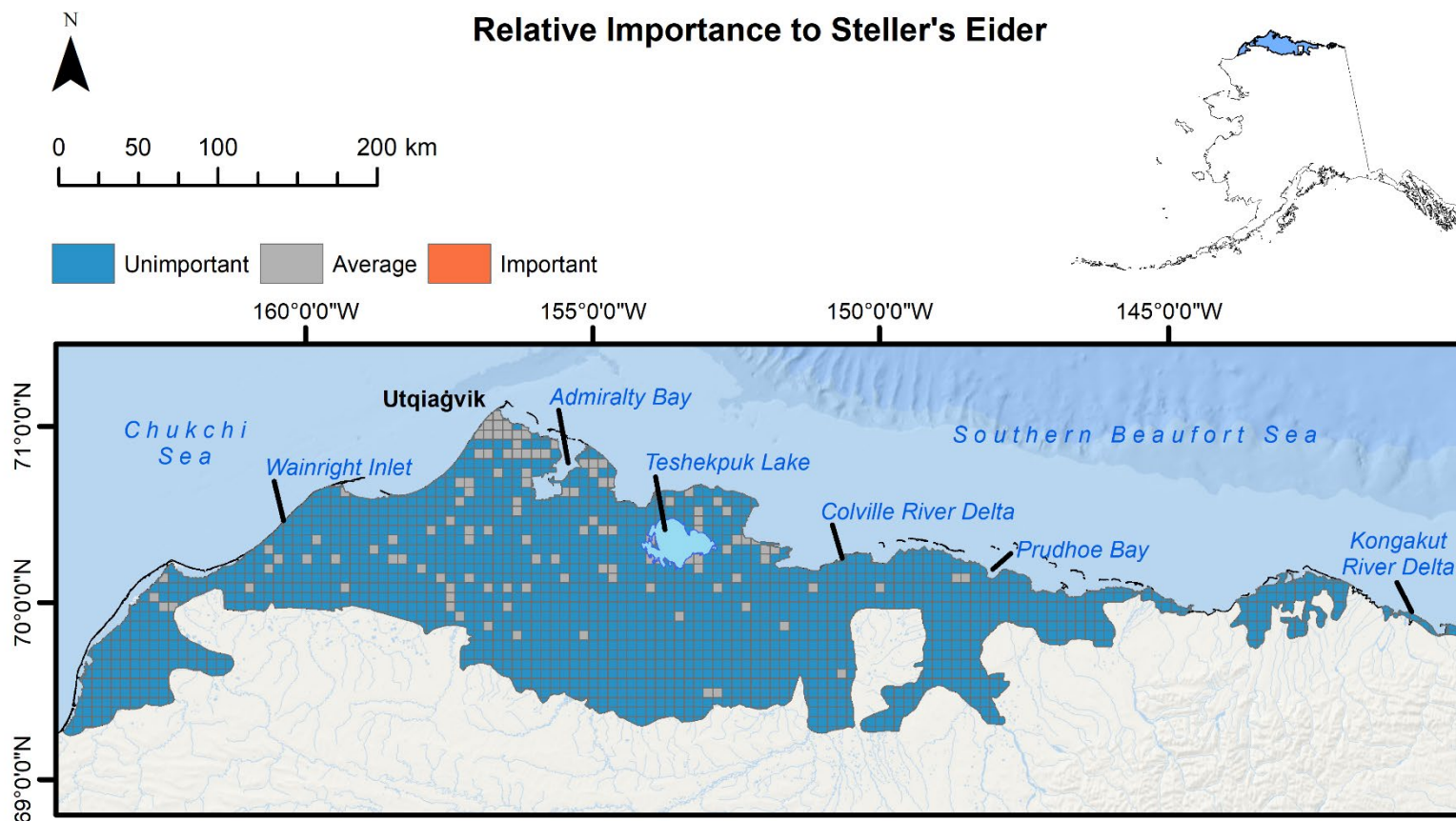


Figure A8.9. Relative importance of cells for Spectacled Eider across the Arctic Coastal Plain, Alaska 1992–2016.

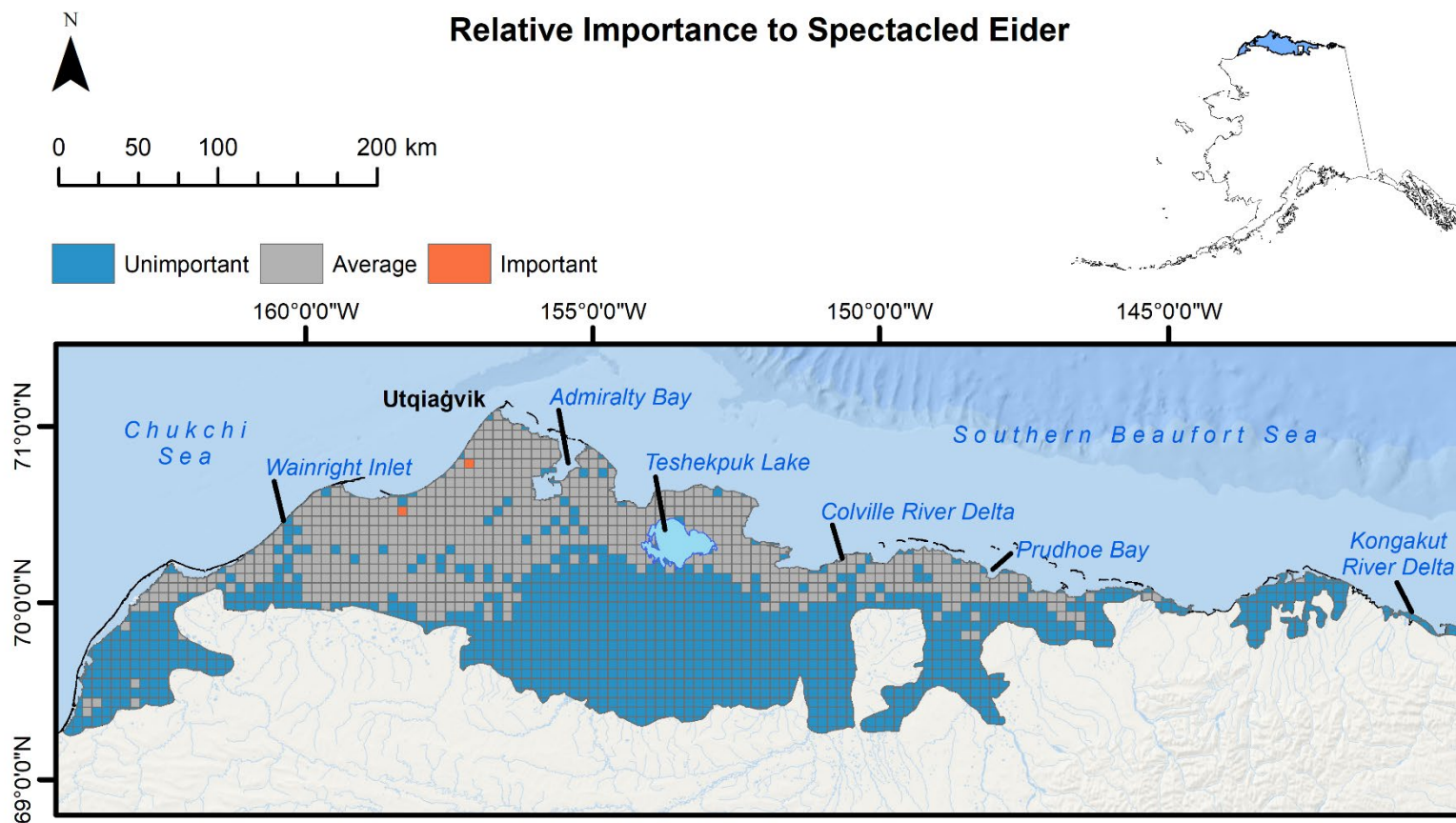


Figure A8.10. Relative importance of cells for King Eider across the Arctic Coastal Plain, Alaska 1992–2016.

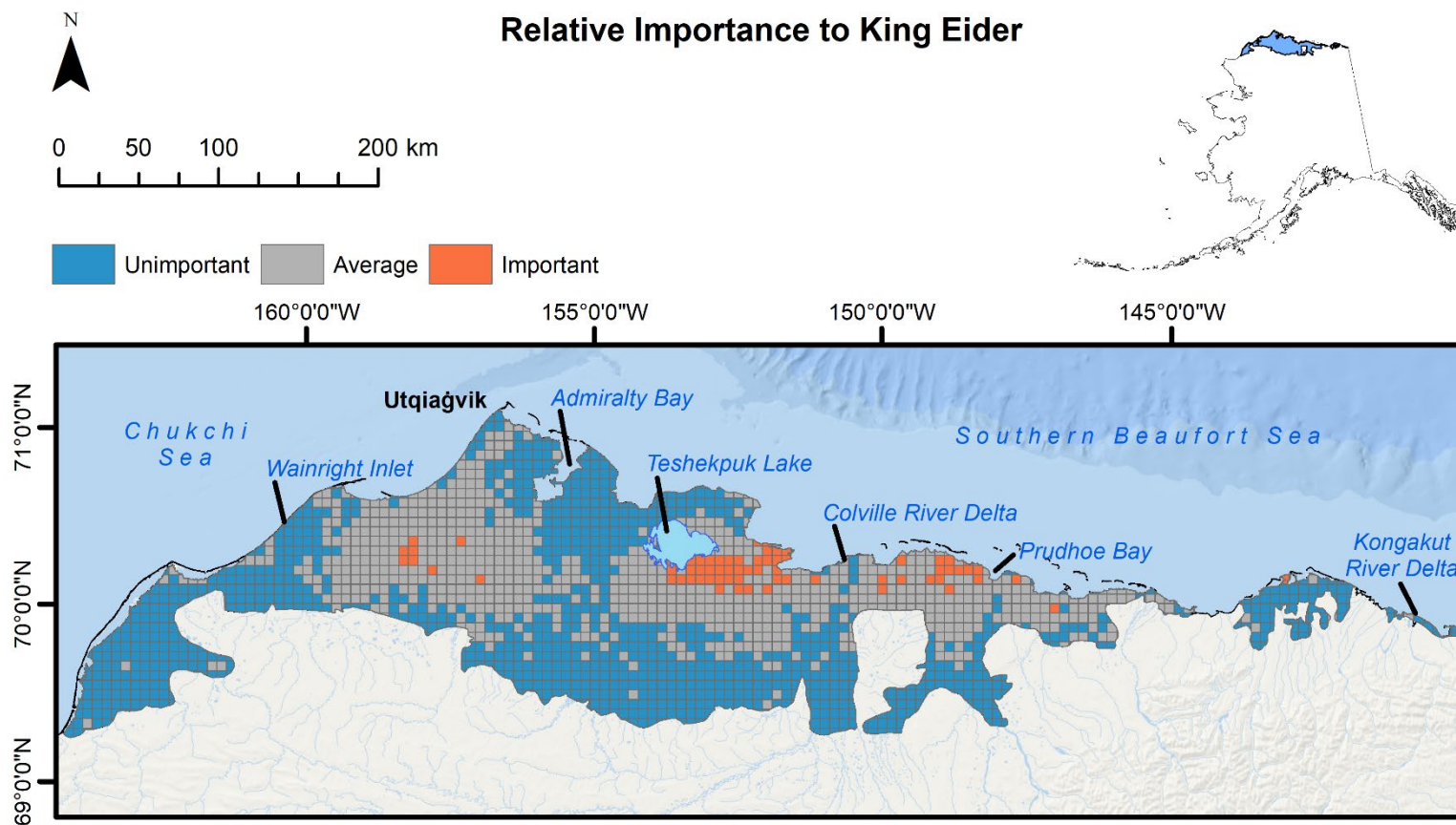


Figure A8.11. Relative importance of cells for White-winged Scoter across the Arctic Coastal Plain, Alaska 1992–2016.

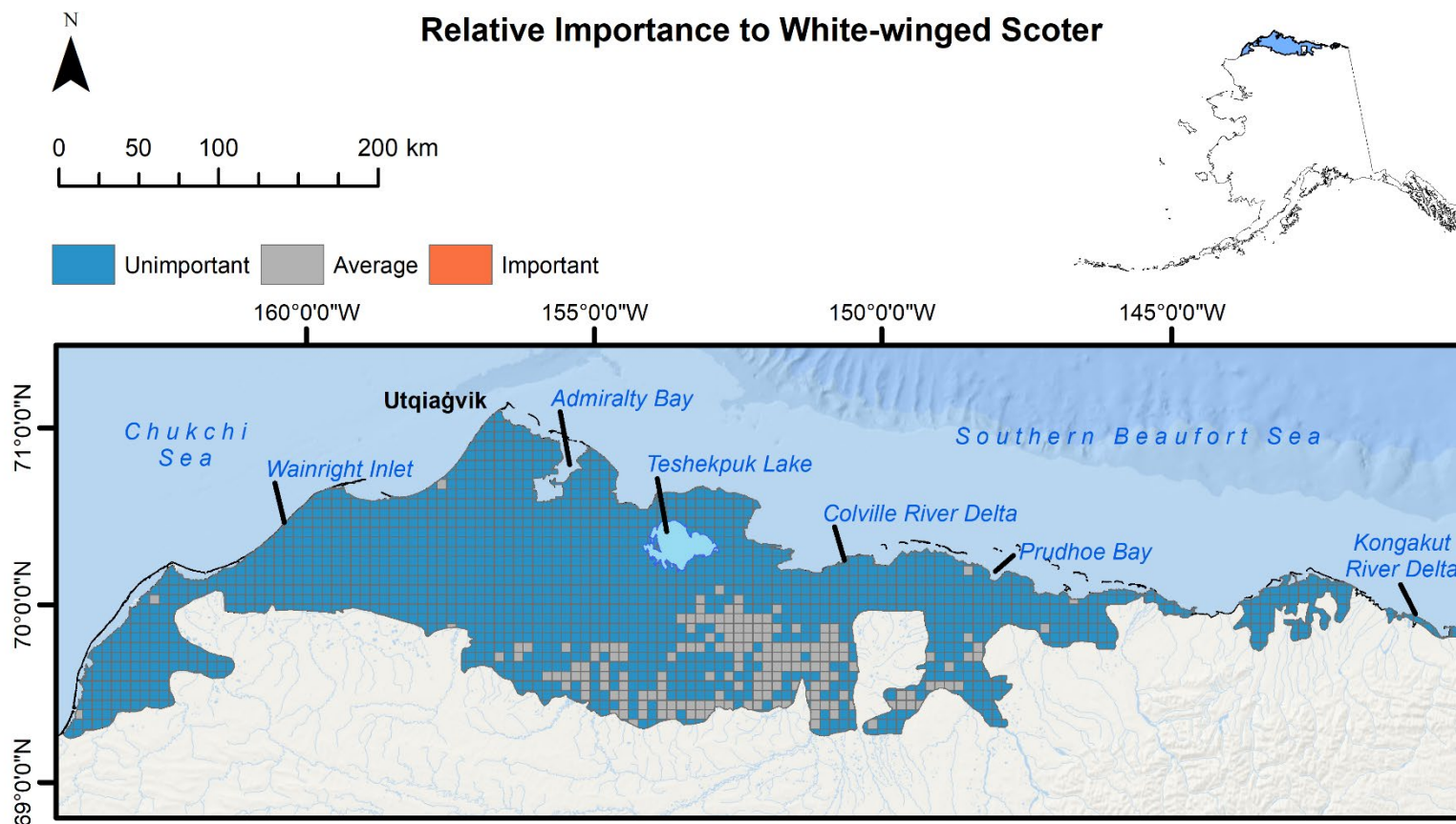


Figure A8.12. Relative importance of cells for Long-tailed Duck across the Arctic Coastal Plain, Alaska 1992–2016.

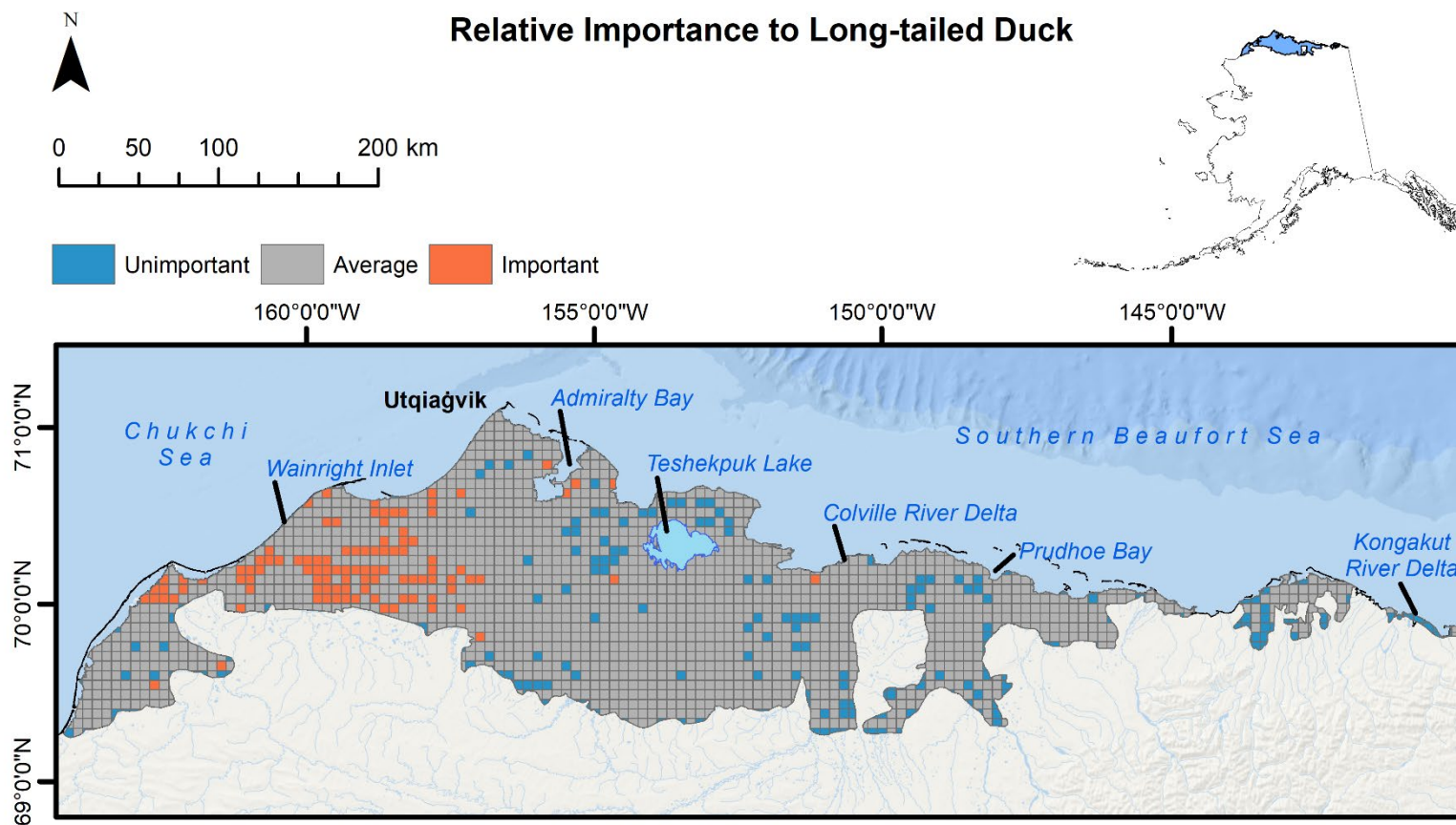


Figure A8.13. Relative importance of cells for Red-breasted Merganser across the Arctic Coastal Plain, Alaska 1992–2016.

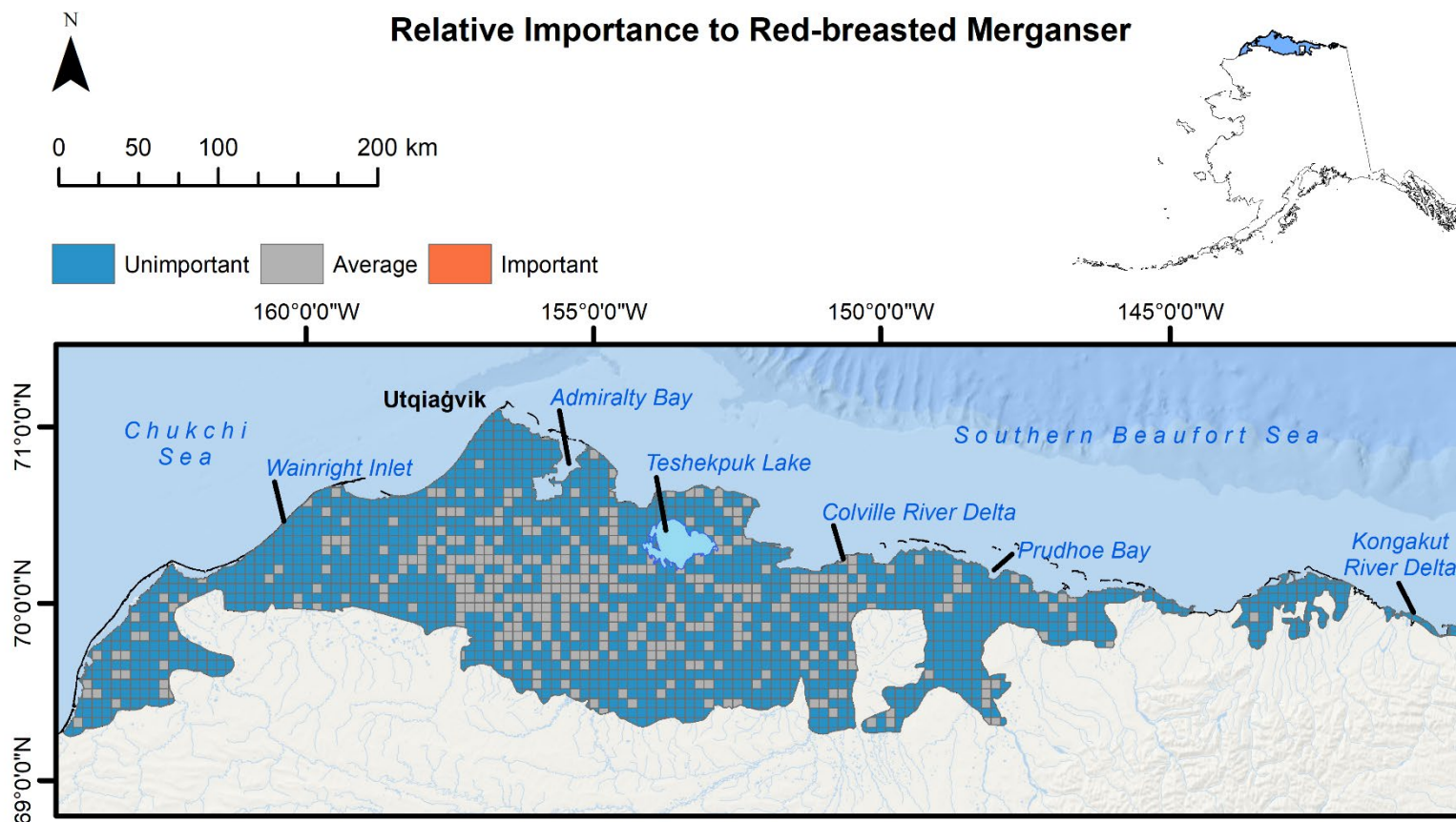


Figure A8.14. Relative importance of cells for Jaeger (Pomarine, Parasitic and Long-tailed combined) across the Arctic Coastal Plain, Alaska 1992–2016.

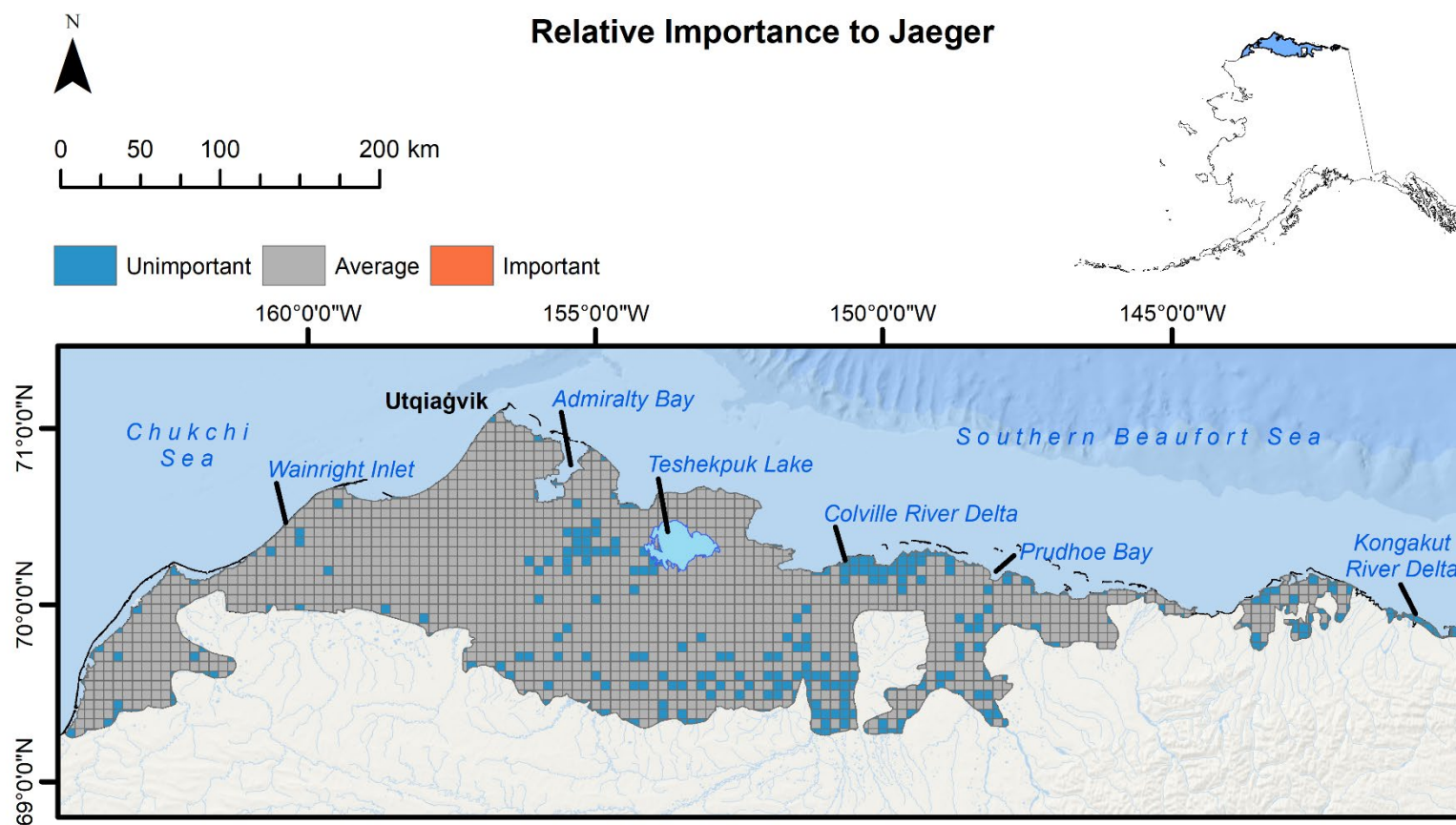


Figure A8.15. Relative importance of cells for Sabine’s Gull across the Arctic Coastal Plain, Alaska 1992–2016.

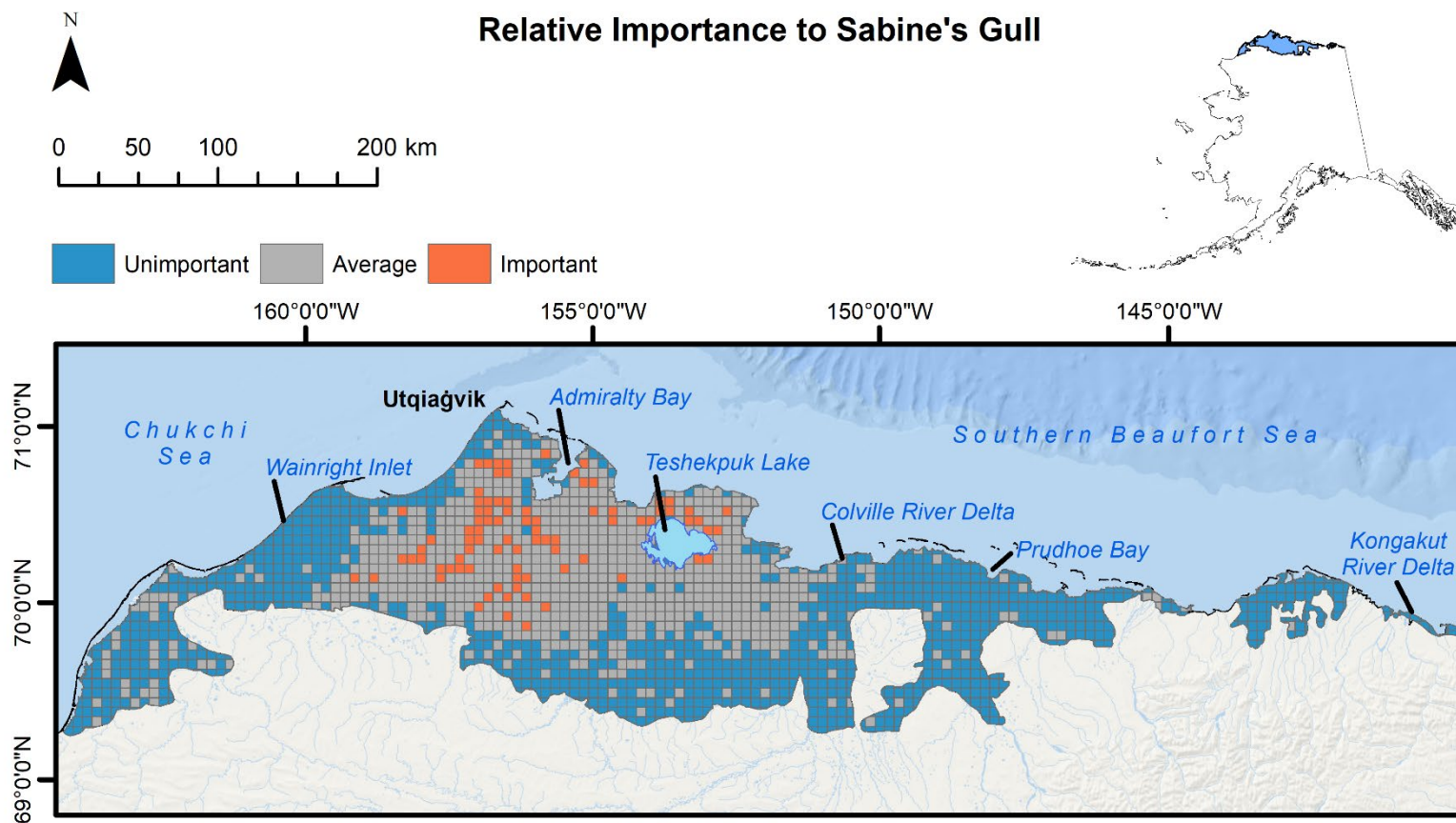


Figure A8.16. Relative importance of cells for Glaucous Gull across the Arctic Coastal Plain, Alaska 1992–2016.

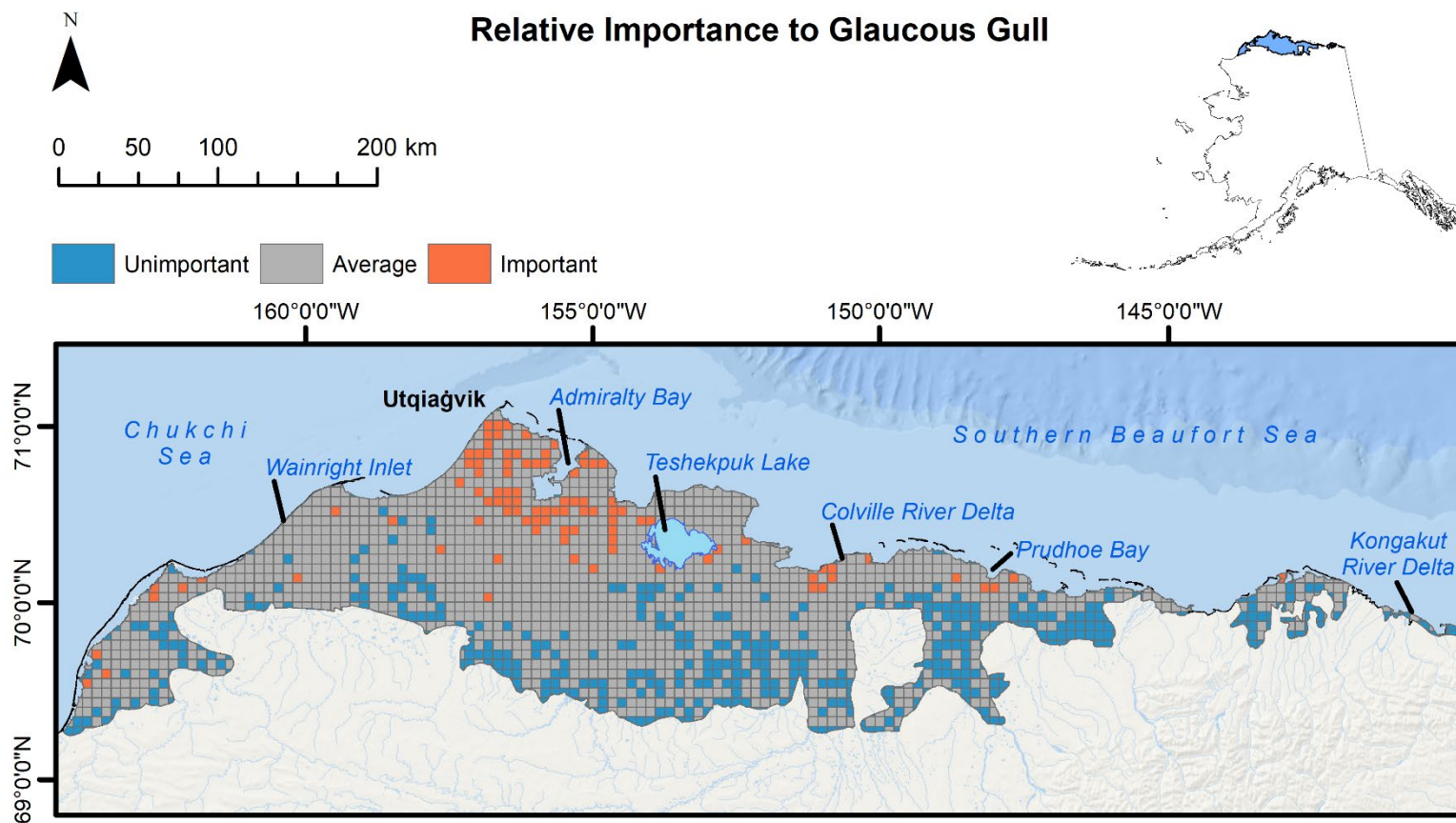


Figure A8.17. Relative importance of cells for Arctic Tern across the Arctic Coastal Plain, Alaska 1992–2016.

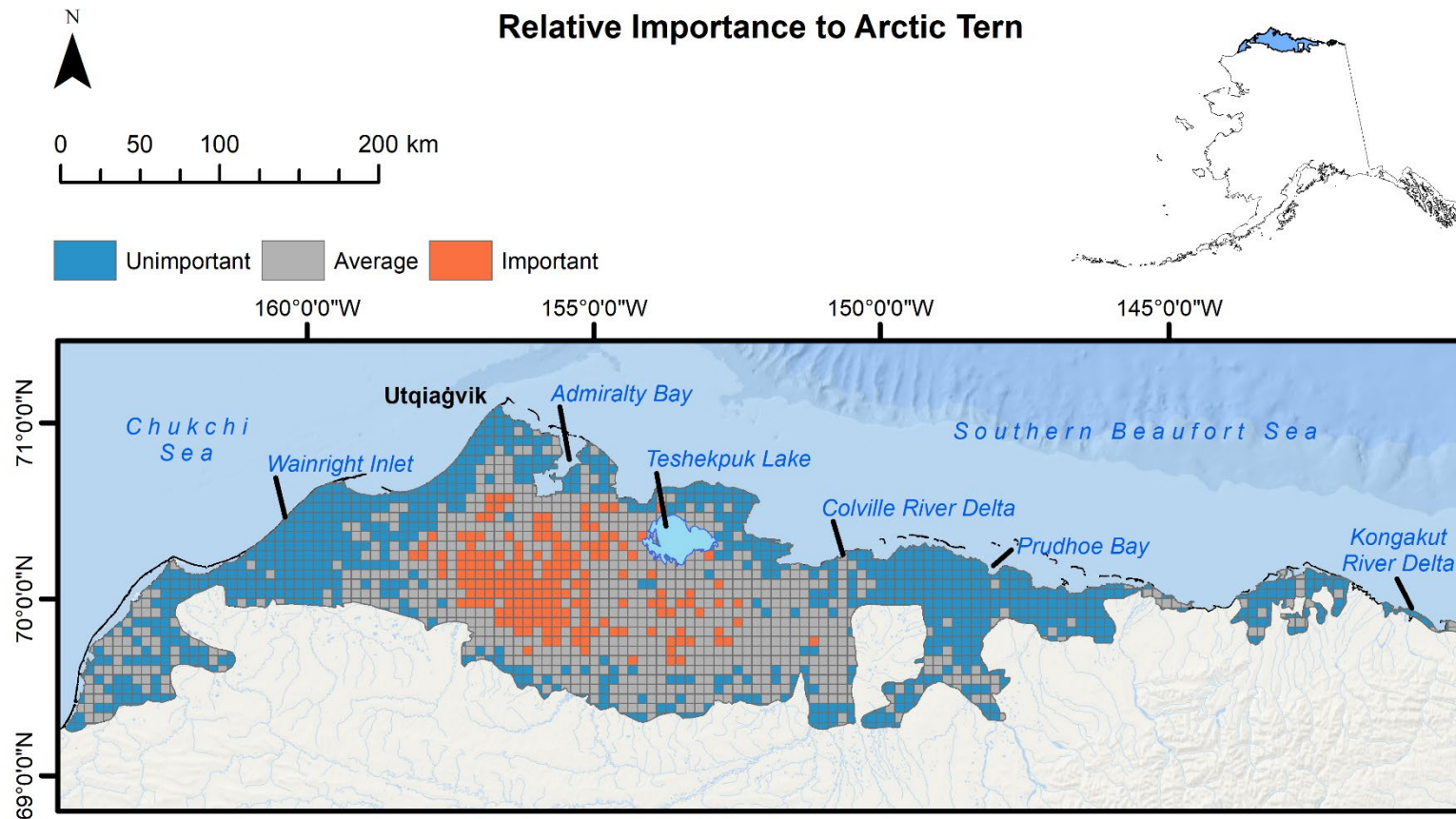


Figure A8.18. Relative importance of cells for Red-throated Loon across the Arctic Coastal Plain, Alaska 1992–2016.

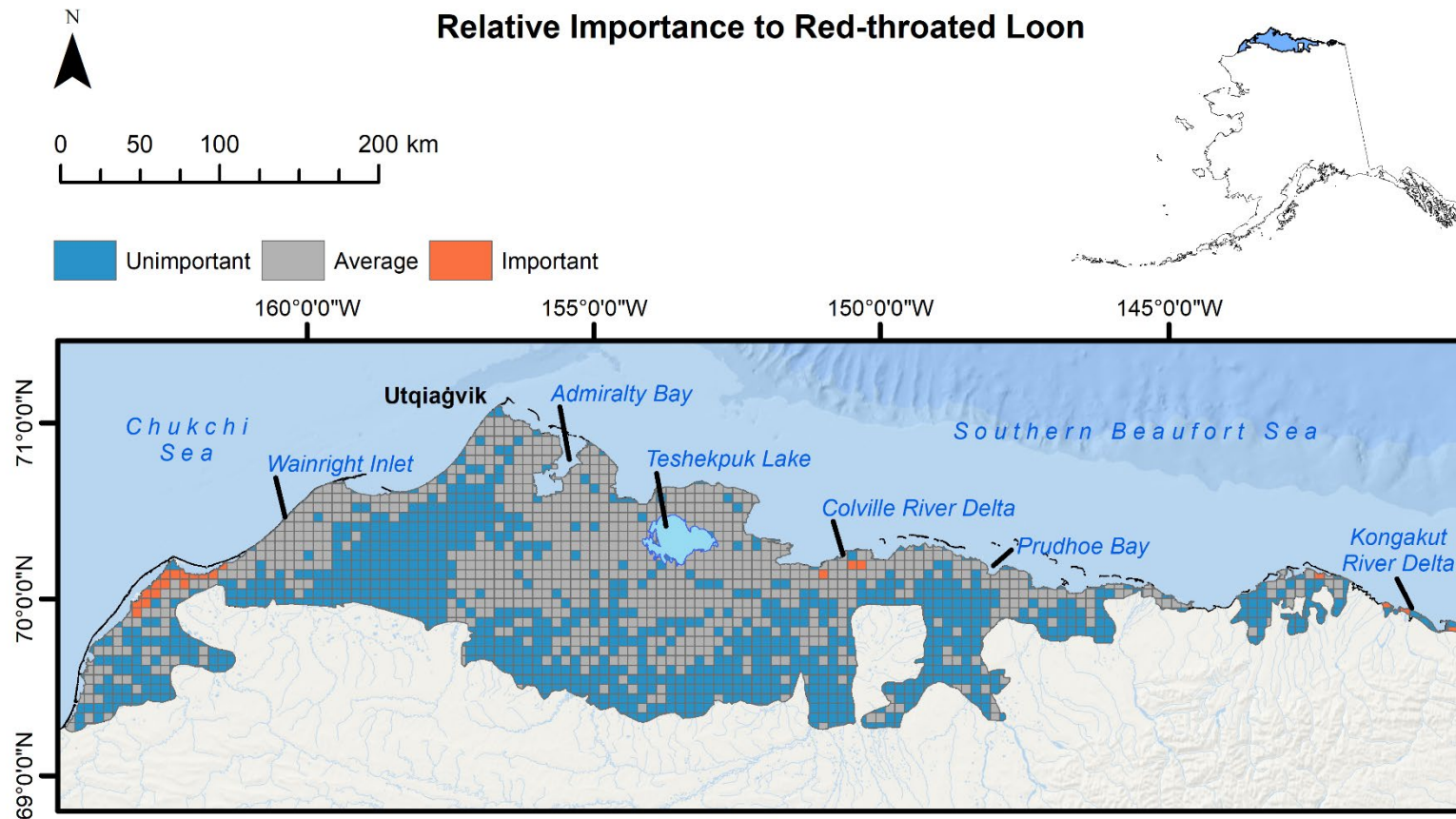


Figure A8.19. Relative importance of cells for Pacific Loon across the Arctic Coastal Plain, Alaska 1992–2016.

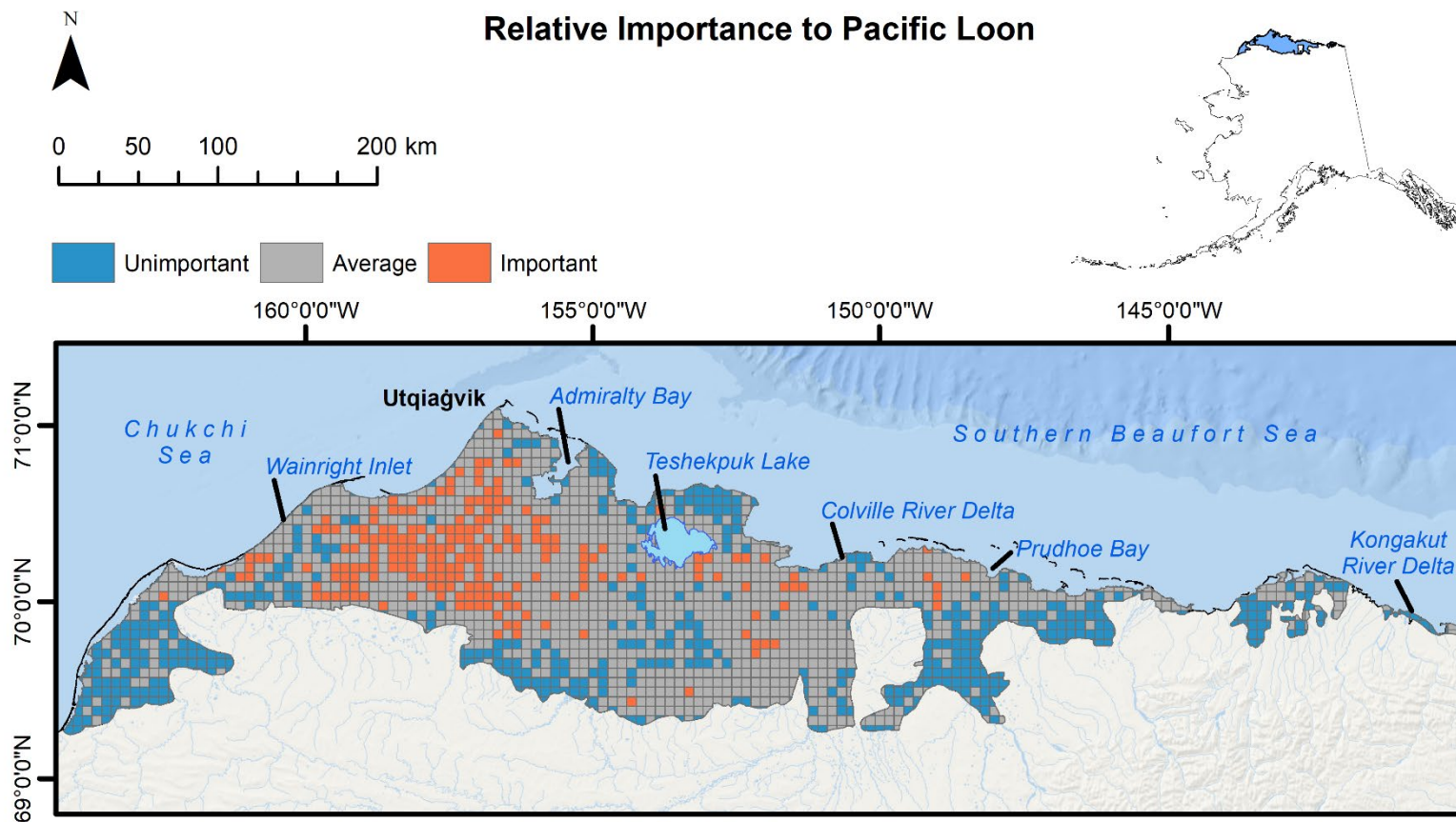


Figure A8.20. Relative importance of cells for Yellow-billed Loon across the Arctic Coastal Plain, Alaska 1992–2016.

